

ريـف REEF

شركة ريف الغربية للمقاولات
Reef Al Garbia Contracting Co, LLC.

SIGN OF QUALITY RELIABILITY &
EFFICIEN & EFFECTIVE CONTROL

Pre
Qualification



www.reefalgardia.com

Table of Contents

About Us

Our Vision

Our Mission

Project Management

Organization Chart

Quality and Policy

HSE & Policy

Manpower and Equipment

Engineering and Project Management

Project List

Civil Department

Mechanical Department

Electrical Department

Fire Fighting

ISO Certificates

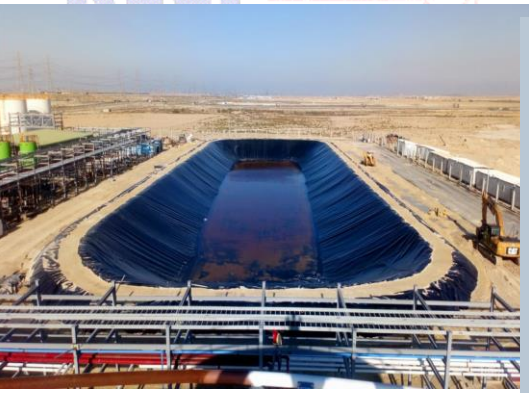
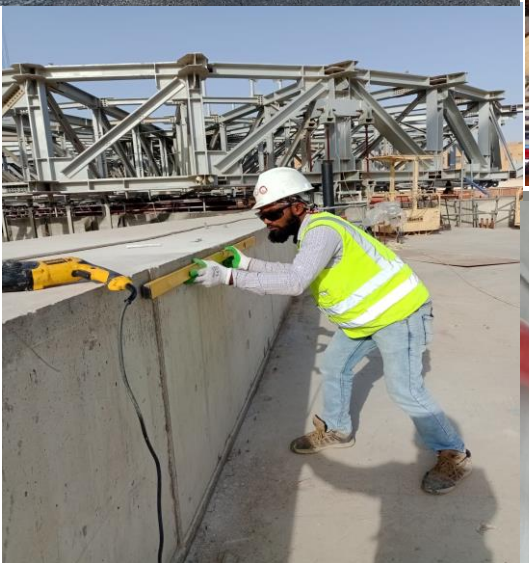
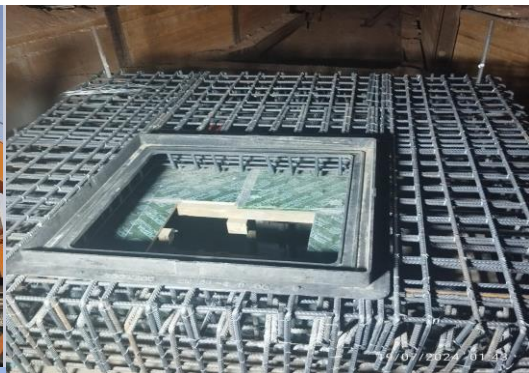
Registration and Certification

Company Information

Key Personal and CVs

Completed Project Contract Copies

Our Clients



About Us

Reef Al Garbia Contracting Co, LLC. (REEF CO) is based in Saudi Arabia, Yanbu Al Bahar. City since 2012 and one of the leading and progressing Contracting, Construction company providing solutions to the customers to meet their production targets and in reduction of cost and downtime.

The consistent massive growth that Reef Co has attained clearly demonstrates the clients confidence in the company's ability to provide world class quality technical and management solutions through a combination of Process Excellence Work Quality, Safety Management and Services delivering innovations.

ReefCo is basically formed by Technocrats & Engineers, having Vast Experience in handling small to medium projects in the fields of Civil, Electro-Mechanical construction and core Mechanical, Instrumentation & Electrical.

We specialize in contracting and construction of civil works and mechanical works, including metal fabrication, tank and piping erection, and design services. We incorporate state-of-the-art technology to deliver high-performance, customized engineering and automation solutions.

We are looking for a Technically Strong and reliable company to jointly participate in many upcoming New Projects, T/A, Maintenance and Upgrade projects in Civil, Mechanical, Electrical & Instrumentation Controls fields and all business we do.

Our existing clients are example for our quality service and dedicated work; we are here to serve you with quality service and dedicated work.

Feel free to contact us to full fill your



We are one of the Best in the Industry

PROJECT CONSULTANCY SERVICES

We are aligned with engineers who see themselves as members of your team.

We are dedicated to undertaking your project using the latest tools and innovative solutions in the industry. As your project progresses, we will continually document each step of the process, communicate status to you in the manner and frequency of your choosing, and monitor all aspects of quality assurance.

We have the experience, the skills and the methods to bring your project to completion on time and on budget.

Design and Engineering Services

We design the packages with JV Indian company inclusive of Equipment, Mechanical, Piping, Civil & Structural, Electrical, Instrumentation, HVAC, Fire Fighting, Underground utility, Offsite and Infrastructure facilities for Chemical / Fertilizer, Petrochemical, Industrial Projects, Infrastructure Projects and Commercial projects. With associates we provide our professional services for Know-How, Process and Energy Benchmarking, Feasibility Studies, Process Simulations, Product yields and quality enhancement, Undertaking HAZAN, HAZOP and Risk Analysis.

Welcome to Management Statement

REEFCO, we believe that management is not just about managing things, but leading people. In today's complex business and construction environment, we need to call on the best talent, enthusiasm and experience to lead a project successfully from instigation to completion. Our management team is uniquely positioned to deliver this advantage to our clients while providing the in-house systems and programs to unlock this potential. We are continuing to hone a successful business model so that we are here to meet our clients' needs both now and in the future. All activities of the overall management function that determine the quality policy, objectives and responsibilities and implement them by means such as quality planning, quality control, quality assurance and quality system. Management maintains the quality of company's products and services so as to meet customer's requirements, to ensure continuous quality of its operational activities and process within the framework of the quality system. Preparation of quality assurance procedures and work instructions to our clients covering defined work processes and activities pertaining to design, supply, installation, testing, commissioning and after sales services. We are



looking for a Technically Strong tallest to jointly participate in many upcoming New Projects, T/A, Maintenance and Upgrade projects, We are fully comply with the Kingdoms labor law especially in terms with the Saudiazation, Timely payment of Zakat (Tax) as well as Gosi, Medical Coverage and other benefits as per the labor law thereby our employees are enjoying a descent Salaries, timely payments, well maintained accommodations, Vacations, and all the other benefits as per the government instructions. We are employing multinationals and we are having branch offices around the globe to recruit the qualified employees and we always ensure their credentials and testimonials are original. Furthermore all our employees are selected through the personnel interview only.

Project Management Services

We believe perfect planning and scheduling is a key of project management. Our project managers have extensive expertise to direct, support and coordinate all aspect of your engineering project irrespective of small or big. Our project managers are proficient in overseeing and directing both internal company support and third party subcontractors to ensure that budget and schedule constraints are met. Our project managers are experienced to fully understand the complete scope of your project and direct it from initiation to completion. We follow the system with responsibilities from planning, execution and project close-out.



Our Mission

REEFCo believes on long term business relationship, by providing the customer excellent service. Educates the customer by conducting seminars / training program to make their lives easy. Service after sales is our philosophy for the success.

We are people who make it our business to be like a good neighbor; who built a premier company by selling and keeping Promises through our marketing partnership; who bring diverse talents and experiences to our work of serving the State Farm customer.

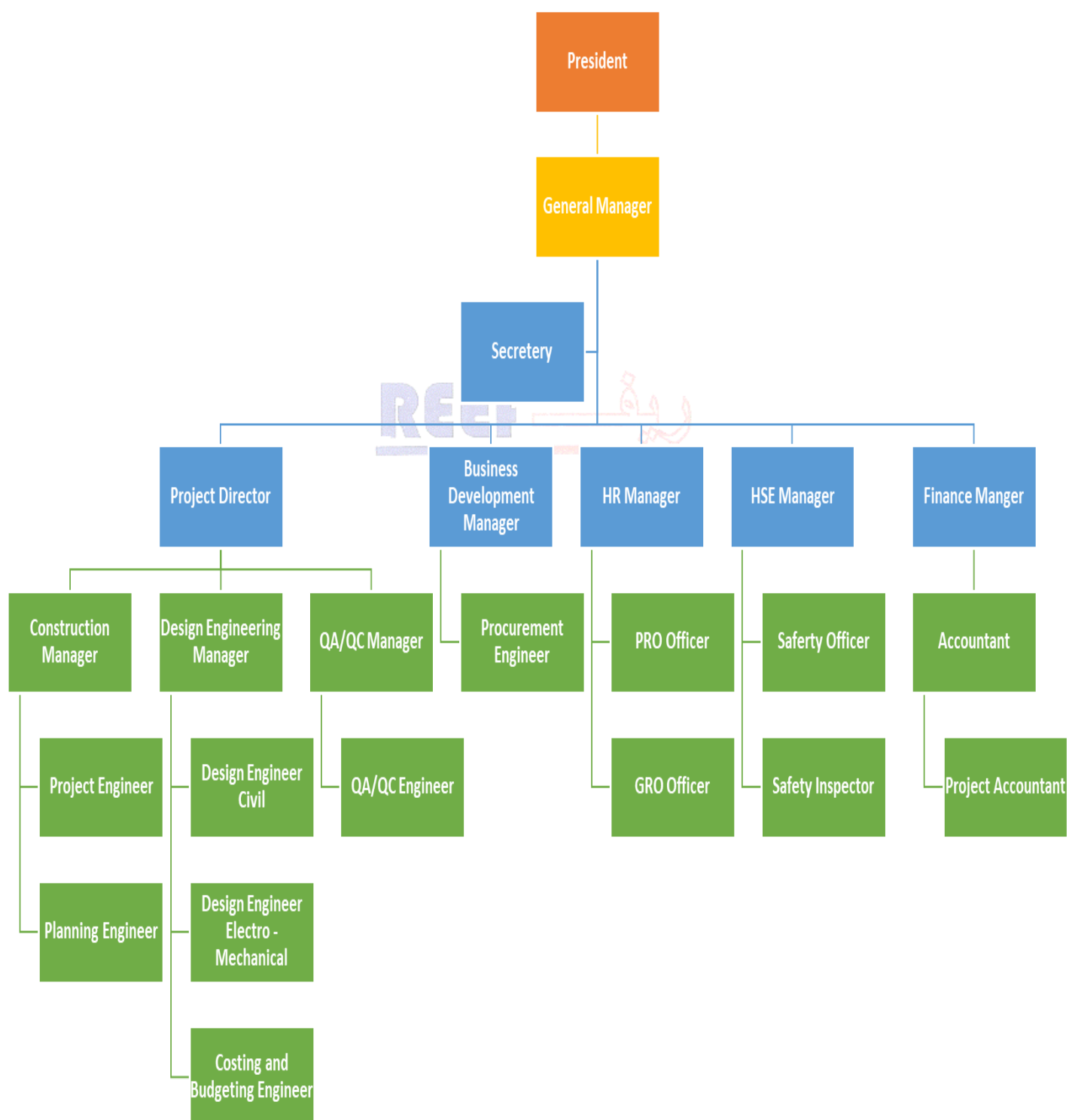
Our vision for the future is to be the customer's first and best choice in the products and services we provide. We will continue to be the leader in the industry and we will become a leader in the

Industrial services arena. Our customers' needs will determine our path. Our values will guide us.

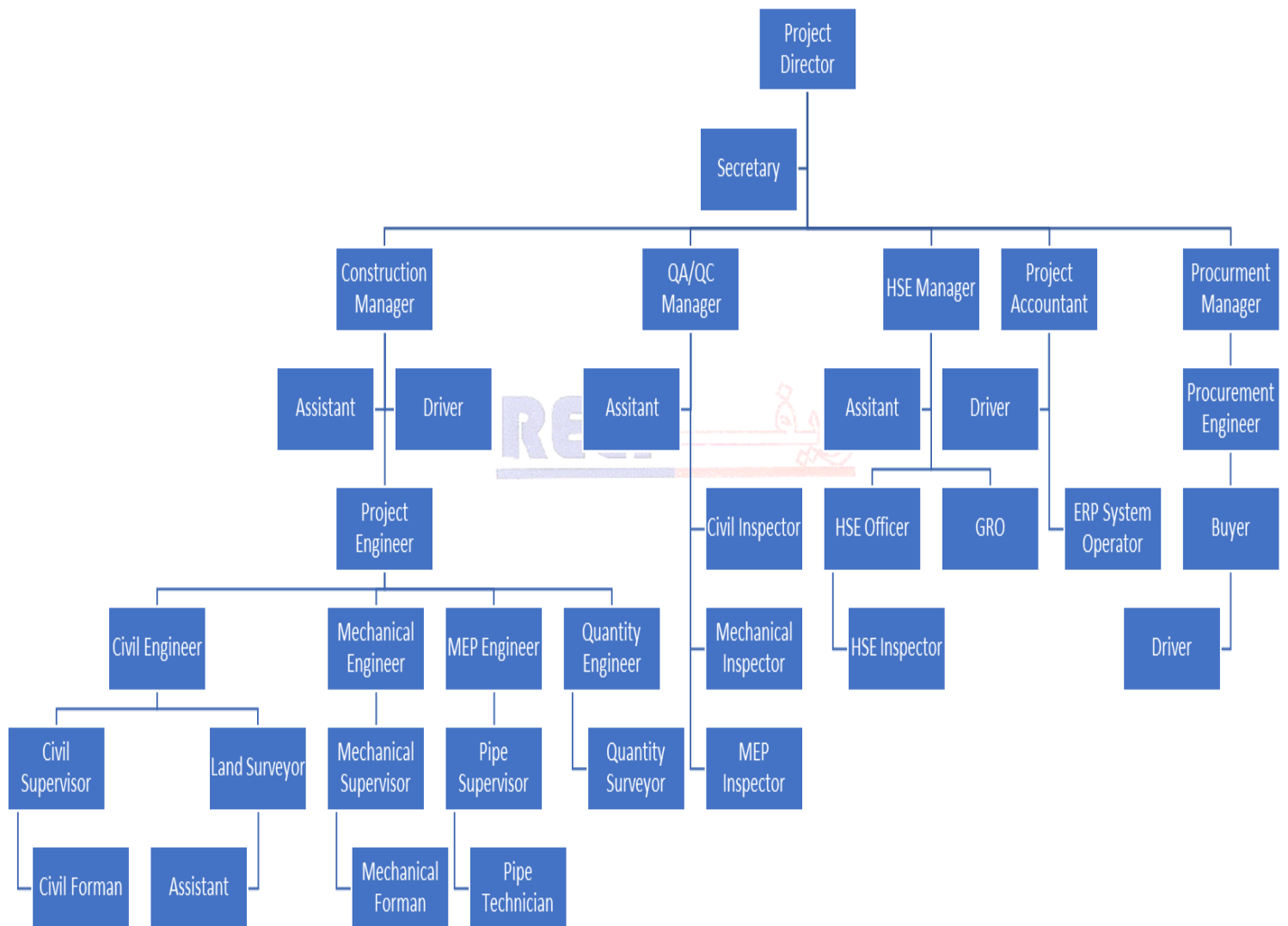
We are also vision to be one among the top companies this region. The consistent massive growth that Reef Algarbia Contracting Co LLC, a combination of Process Excellence Work Quality, Safety, Management.

Our History REEFCo is established in Saudi Arabia by technocrats and engineers. It was his goal to establish a construction business big enough to service clients' requirements, yet personal enough to understand clients' needs. ReefCo would be proud of what ReefCo has become and what we continue to be.

Organization Chart



Reef Co Engineering ProjectSite Organizational Chart



Quality Policy Statement

In Reef Al Garbia General Contracting Co LLC, we are committed to providing customers with service of the highest possible level of quality. In order to achieve this, we are continually improving our processes and services, meeting and exceeding customer satisfaction at all times.

Commitment

- Fully identify and conform to the needs of our customers, improving customer satisfaction.
- Provide extensive staff training, promoting a 'do it right first time' attitude towards quality.
- Achieving and maintaining a standard of excellence in the operation of our business.
- Providing sufficient resources and equipment to ensure that we can operate to the documented management system. The management system is based on the principles of ISO 9001:2015, the International Standard for Quality Management Systems.
- Ensuring that our quality management system provides a framework for the management and control of our activities for Quality, Environment and Health & Safety. It also assists in establishing and reviewing strategic objectives for the company.
- Continually monitoring and reviewing our Quality Policy to ensure that it remains relevant and effective to the changing needs of our customers.
- Continuous appraisal of our business to ensure that the quality of service we provide fully and consistently meets our customers' expectations and all current and impending legislative requirements.
- The effectiveness of our quality system is monitored by planned audits, management reviews and customer satisfaction surveys to ensure quality service delivery.

Implementation

This Quality Policy statement will be reviewed annually. Responsibility for compliance to this policy rests with the Board of Directors, who will monitor the effectiveness of the policy and its associated initiatives. This Quality Policy Statement will be displayed prominently, and access to the complete Quality manual detailing procedures will be available on the premises for reference by any employee, visitors and external parties.

Date: 02 March 2025

Managing director.....



Our Quality Policies Manual

1. Purpose and Scope .

1. 1. Introduction.
1. 2. Purpose.
1. 3. Scope.

2. Quality Management System.

2. 1. General Requirements.
2. 2. Documentation Requirements.

3. Management Responsibility.

3. 1. Management Commitment.
3. 2. Customer Focus.
3. 3. Company Policy.
3. 4. Planning Responsibility, Authority and Communication.
3. 5. Management Review.

4. Resource Management.

4. 1. Provision of Resources
4. 2. Human Resources

5. Product and Services Realization.

5. 1. Planning of Product and Services Realization.
5. 2. Customer – Related Process.
5. 3. Design, Specification, Scope and Development.
5. 4. Product Identification and Traceability.

6. Contracts and Purchasing.

6. 1. Contracting and Purchasing Process.
6. 2. Contract and Purchasing Information.
6. 3. Verification of Contracted and Purchased Product.

7. Measurement, Analysis and Improvement.

7. 1. General.
7. 2. Monitoring and Measurement.
7. 3. Analysis of Data.
7. 4. Improvement .

8. Construction and Project Management

8. 1. Introduction, Purpose and Scope
- 8 .2. Introduction



Reef Co has in place a Quality Management System (QMS) which promotes “Quality” as a strategic imperative for our business based on the principle that; the QMS is a comprehensive and fundamental set of rules and beliefs for leading and operating the Reef Co organization, aimed at continually improving performance over the long-term by focusing on the needs and expectations of our customers while addressing the requirement of all the organization stake holders – owners, employees, supplier and environment.

The QMS at Reef Co operates at 5 levels of implementation which are illustrated in figure 1.0 enabling the organization to have comprehensive quality assurance system. The QMS at Reef Co, provides a standard approach to the prevention of quality problems through planned and systematic activities: specification, review, monitoring, preventive action and documentation.

The Quality Policies Manual establishes requirements and guidelines for the overall QMS objectives at Reef Co. The Quality Procedures Manual is a collection of Standard Operating Procedures (SOPs) which are documented in conformance with, and support the Quality Policies Manuals requirements and guidelines. Work instructions, for specific performance of individual tasks, are documented as necessary to support each applicable quality procedure. Records provide the objective evidence of compliance.

LEVEL I Company Policy A documented Policy signed by an Amaco executive	LEVEL II Quality Policies Manual A manual that establishes requirements and guidelines for the overall Quality Management System objectives.	LEVEL III Standard Operating Procedures All the requirements and guidelines for specific operations that support the Quality Management System
Level IV Work Instructions The specific instructions for performance of individual tasks, Documented as necessary to clarify.	Level V Records A completed form or test result that provides the objective evidence of Quality Management System compliance.	



Figure 1.0:
Levels of Quality Management at REEF Co

Customer	Assure conformance to defined	Understand current and future customer needs
Focused Organization	customer requirements. Ensure effective response to customer feedback.	and expectations. Address customer loyalty. Measure customer satisfaction and act on it.
Leadership	Set and deploy policy and verifiable objectives, provide resources and establish an environment for Quality.	Establish vision, direction and shared values. Set challenging goals and implement strategies to achieve them. Coach, facilities and empower people.
Involvement of People	Establish competency levels, train and qualify personnel. Provide clear authority and responsibility.	Create personal ownership of the organizations goal, by using it's people's knowledge and experience, and through education achieve involvement in operational decisions and process improvement.
Process Approach	Establish, control and maintain documented processes.	Explicitly identify internal/ external customers and suppliers of processes. Focus on use of resources in process activities, leading to effective use of people, equivalent, methods and materials.
System Approach-to Management	Establish and maintain a suitable and effective documented Quality Management System.	Identify a set of processes in the system. Understand their interdependencies. Align the processes with the organizations goals. Measure results against key objectives.
Continual Improvement	Through management review, internal / external audits and corrective / preventive actions, continually improve the effectiveness of the Quality Management System.	Set realistic and challenging improvement goals, provide resources and give people the tools, opportunities and encouragement to contribute to continual improvement of processes.

Factual Approach-to Decision Making	Management decisions and actions on the Quality Management Systems are based on the analysis of factual data and information gained from reports on audits, corrective action, nonconforming products, customer complaints and other resources.	Decisions and actions are based on the analysis of data and information to maximize productivity and to minimize waste and rework. Effort is placed minimizing cost, improving performance and market share through the use of suitable tools and technology.
Mutually Beneficial Supplier Relationships	Adequately define and document requirements to be met by subcontractors and suppliers/vendors. Review and evaluate their performance to control the supply of quality products and services.	Establish strategic alliances or partnerships, ensuring early involvement and participation defining the requirements for joint development and improvement of products, processes and systems. Develop mutual trust, respect and commitment to customer satisfaction and continual improvement.

Figure 2.0: Principles and Benefits of QMS at REEF Co

1. 1. Purpose
The purpose of Quality Policies Manual is to document the Quality Management System used by Reef Co to assure the quality of its products and services.
1. 2. Scope
The scope of the quality Management System includes only the activities and materials of Reef Co operations under the requirements of current contracts and agreements.
2. 1. Quality Management System
 2. 1. 1. General Requirements
 2. 1. 1. Reef Co has implemented Quality Management System (QMS) that is continuously maintained for effectiveness and process improvements in accordance with the requirements of internationally acknowledged quality management and quality assurance standards.
 2. 2. Documentation Requirements
 2. 2. 1. General
 2. 2. 1. 1. The Quality System Documentation consists of five level; the Reef Company Policy (level one), the Quality Policies Manual (level two), Quality Procedures Manual (level three), Work

Instructions(levelfour)andRecords(levelfive).Supplementalto these documents are the Inspection and Test Plans and Master Lists.

- 2. 2. 1. 2. Level I Company Policy – A documented Policy Statement.
- 2. 2. 1. 3. Level II Quality Policies Manual - The Quality Policies Manual establishes requirements and guidelines for the overall Quality System objectives. These requirements and guidelines are applicable to the operation of Reef.
- 2. 2. 1. 4. Level III Quality Procedures – The Quality Procedures Manual is a collection of Standard Operating Procedures (SOP's) which are documented in conformance with, and support of Quality Policies Manual's requirements and guidelines. The Quality Procedures Manual details the implementation of requirements and guidelines for all hard copies at relevant workstations at Reef locations throughout Saudi Arabia)
- 2. 2. 1. 5. Level IV Work Instructions – Work instructions are documented as necessary to support each applicable Quality Procedure. They detail specific quality or inspection information and specific instructions for performance of individual tasks.
- 2. 2. 1. 6. Level V Records – Completed forms provide the objective evidence of compliance.

- 2. 2. 2. Quality Manual
 - 2. 2. 2. 1. The Director of Projects of Reef co delegates the responsibility for the preparation, distribution and the maintenance of the Quality Policies Manual to the Administration & Property Manager and Construction Manager.
 - 2. 2. 3. Revisions are subject to the following:
 - 2. 2. 3. 1. Manual revisions are controlled by page and only revised pages of a section have revision level, (i.e.Rev.:2R)
 - 2. 2. 3. 2. Revision levels are assigned in numeric order, starting with "1" for the original issue and increasing by one with each revision.
 - 2. 2. 3. 3. Section: 0.1 (Index) is also revised to incorporate identification of the changed section / page and to document the revision status of the manual.
 - 2. 2. 4. Controlled / Uncontrolled Copies:
 - 2. 2. 4. 1. The Administration & Property Manager and Construction Manager issue only Controlled Copies of the Quality Assurance Manual. 2.2.4.2. Controlled copies are assigned according to the Quality Manual Distribution List. The Administration & Property Manager and Construction Manager maintain the Quality Manual Distribution List.
 - 2. 2. 4. 3. Serial numbers of copies downgraded from controlled to uncontrolled are not reused.
 - 2. 2. 4. 4. Only controlled copies of the Quality Policies Manual are distributed and used by Reef Co personnel.
 - 2. 2. 5. Revision Distribution:

2. 2. 5. 1. The Administration and Property Manager and Construction Manager revise all copies of the Quality Policies Manual and distributes as required.
2. 2. 5. 2. It is the responsibility of the Director of Projects and the Administration & Property Manager and Construction Manager to implement and maintain the Quality System defined in the Quality Policies Manual.
2. 2. 6. Control of Documents:
 2. 2. 6. 1. Reef establishes, implements and maintains documented procedures to control all documentation and data that relate to Quality System requirements, to include documents of external origin such as standards and customer service levels.
3. 1. Management Commitment
 3. 1. 1. Reef Co has implemented a Quality Management System that is continuously maintained for effectiveness and process improvements in accordance with the requirements of acknowledged information, quality standards, customer service agreements and all other statutory of regulatory requirements as appropriate.
3. 2. Customer Focus
 3. 2. 1. Reef establishes implements and maintains documented procedures for contract review and for the coordination of related activities.
 3. 2. 2. It is responsibility of the Construction Department to review all tenders and contract offerings.
 3. 2. 3. Customer quotations, inquiries, order and contracts are reviewed to ensure customer requirements are adequately defined and documented.
3. 3. Company Policy
 3. 3. 1. Reef Co defines and documents its Policy for Quality, which provides the overall objectives for an effective Quality Management System. The Company Policy is relevant to the Company's goals and the expectations of its customers.
 3. 3. 2. Reef Co is a provider of property development, design, construction management and construction services with sales in all regions of Saudi Arabia. Our company Policy is:
Reef Co is committed to providing its customers with Quality products and services that continually meet and exceed customer expectations.

Approved: _____ Date: _____
Director of Projects

3. 4. Planning
 3. 4. 1. Quality Objectives
 3. 4. 1. 1. The Director of Projects is responsible for identifying and implementing the processes; equipment and controls (including test equipment needed to achieve the required quality).
 3. 4. 1. 2. It is the responsibility of the Director of Projects and the Administration

- & Property Manager and Construction Manager to ensure the compatibility of all Quality Management System pieces.
- 3. 4. 2. Quality Management System Planning
- 3. 4. 2. 1. Reef Co Director of Projects reviews the appropriate resource requirements for planning, provides adequate resources and assigns trained personnel to execute all functions of the Quality Management System.
- 3. 5. Responsibility, Authority and Communication
- 3. 5. 1. Responsibility and Authority
- 3. 5. 1. 1. Reef Co Directors of Project is responsible for the review of the appropriate resource requirements, providing adequate resources and assigning trained personnel to communicate and execute all functions of the Quality Management System within the organization.
- 3. 5. 2. Management Representative
- 3. 5. 2. 1. The Administration & Property Manager and Construction Manager at Reef Co are the Management Representatives and are responsible for reporting the progress and implementation of the provisions outlines in the Quality Policies Manual in accordance with acknowledged international standards and customer service level agreements and expectations.
- 3. 5. 3. Internal Communication
- 3. 5. 3. 1. Reef Co's Director of Projects ensures that appropriate
- 3. 6. Management Review
- 3. 6. 1. General communications processes are established within the organization.
Thus a Quality Review Council Meeting is conducted weekly regarding the effectiveness of the Quality Management System.
- 3. 6. 1. 1. The Director of Projects, Administration & Property Manager and Construction Manager with company staff conduct Management Review of the Quality Management System annually, (at a minimum); to assess its continued suitability, effectiveness and future direction.
- 4. Resource Management
- 4. 1. Provision of Resources
- 4. 1. 1. Reef co's Director of Projects is responsible for determining the appropriate resource requirements and providing adequate resources for the organization. This includes, assigning trained personnel to implement and maintain the Quality Management System and continually improve its effectiveness in regards to customer satisfaction and customer requirements.
- 4. 2. Human Resources
- 4. 2. 1. General
- 4. 2. 1. 1. Reef establishes implements and maintains documented procedures for identifying training needs and for ensuring that personnel performing activities affecting quality are adequately trained, qualified and certified per established requirements or standards.
- 4. 2. 2. Competence , Awareness and Training

4. 2. 2. 1. Department and Project Managers are responsible for defining personnel qualifications and ensuring that the appropriate personnel are trained and aware of their role affecting product quality.
5. Product and Service Realization
 5. 1. Planning of Product and Service Realization
 5. 1. 1. Reef Co develops the processes needed for Product and Service Realization in accordance with the requirements of other processes of the Quality Management System.
 5. 2. Customer-Related Processes
 5. 2. 1. Determination of Requirements Related to the Product and Service.
 5. 2. 1. 1. Reef Co Determines the following:
 5. 2. 1. 1. 1. The requirements specified by the customer, including the requirements for delivery and post-delivery activities.
 5. 2. 1. 1. 2. The requirements not stated by the customer but necessary for specified or intended use, where such is known.
 5. 2. 1. 1. 3. Statutory and regulatory requirements related to the product and service.
 5. 2. 1. 1. 4. Any additional requirements determined by the organization.
 5. 2. 2. Review of Requirements Related to the Product and Service
 5. 2. 2. 1. Reef Co reviews the requirement related to the product prior to contracting with a customer and ensures that:
 5. 2. 2. 1. 1. Product and service requirements are defined.
 5. 2. 2. 1. 2. Contract or order requirements differing from those previously expressed are resolved.
 5. 2. 3. Customer Communication
 5. 2. 3. 1. Reef Co develops and implements effective methods of communicating with customers in relation to product information, enquiries, contracts or order handling, including amendments and customer feedback, including customer complaints.
 5. 3. Design Specification, Scope and Development
 5. 3. 1. Design Specification, Scope and Development of Products and Services
 5. 3. 1. 1. Reef Co plans and controls the design, specification, scope and development of product and services and manages the interfaces between different groups involved to ensure communication by determining:
 5. 3. 1. 1. 1. The design, specification, scope and developments stages.
 5. 3. 1. 1. 2. The review, verification and validation that are appropriate to each design, specification, scope and development stage.
 5. 3. 1. 1. 3. The responsibilities and authorities for design, specification, scope and development.
 5. 3. 2. Design, Specification, Scope and Development Inputs
 5. 3. 2. 1. Reef Co determines input relating to product and service design, specification, scope and development to include:
 5. 3. 2. 1. 1. Functional and performance requirements.
 5. 3. 2. 1. 2. Applicable client statutory and regulatory requirements.
 5. 3. 3. Design, Specification, Scope and Development Outputs
 5. 3. 3. 1. Reef Co provides the outputs in a form that enables verification against the design specification, scope and development input, which are approved prior to release.

5. 3. 3. 2. The design, specification, scope and development outputs shall:
5. 3. 3. 2. 1. Meet the input requirements for design, specification, scope and development.
5. 3. 3. 2. 2. Provide appropriate information for purchasing, implementation and for service provision.
5. 3. 4. Design, Specification, Scope and Development Review
5. 3. 4. 1. Reef Co performs systematic review of design, specification, scope and development in accordance with planned arrangements to:
5. 3. 4. 1. 1. Evaluate the ability of the results of design, specification, scope and development to meet requirements.
5. 3. 4. 1. 2. Identify any problems and propose necessary actions.
5. 3. 5. Design and Development Verification
5. 3. 5. 1. Reef Co performs verification of design and development in accordance with planned arrangements to ensure that the design, specification, scope and development outputs have met the design and development input requirements. Records of the results of the verification and necessary actions are maintained.
5. 3. 6. Control of Design, Specification, Scope and Development Changes
5. 3. 6. 1. Reef Co identifies design, specification, scope and development changes and records are maintained. The changes are reviewed, verified and validated, as appropriate and approved before implementation. The review of design, specification, scope and development changes includes evaluation of the effect of the changes on constituent parts of products and services already delivered by Reef Co.
5. 4. Product Identification and Traceability
5. 4. 1. Reef Co establishes, implements and maintains the appropriate documented procedures for assets and product identification and traceability during all stages of product and service realization.
5. 4. 2. The Administration & Property Manager is responsible for asset identification and traceability. Assets both of customers and Reef Co are identified during all stages of service and use.
6. Contracts and Purchasing
6. 1. The Contracting and Purchasing Processes
6. 1. 1. Reef has developed documented and implemented procedures and systems to ensure that material, products and services purchased from suppliers and contracts placed with contractors conform to specified requirements.
6. 2. Contract Purchasing Information
6. 2. 1. Reef ensures that specified contract and purchase requirements are adequate prior to being communicated to the supplier and that they describe the product, to include:
6. 2. 1. 1. Requirements for approval of products, procedures. Processes and equipment.
6. 2. 1. 2. Quality Management System requirements.
6. 3. Verification of Contracted and Purchased Product.
6. 3. 1. Reef Co ensures that the contracted and purchased products

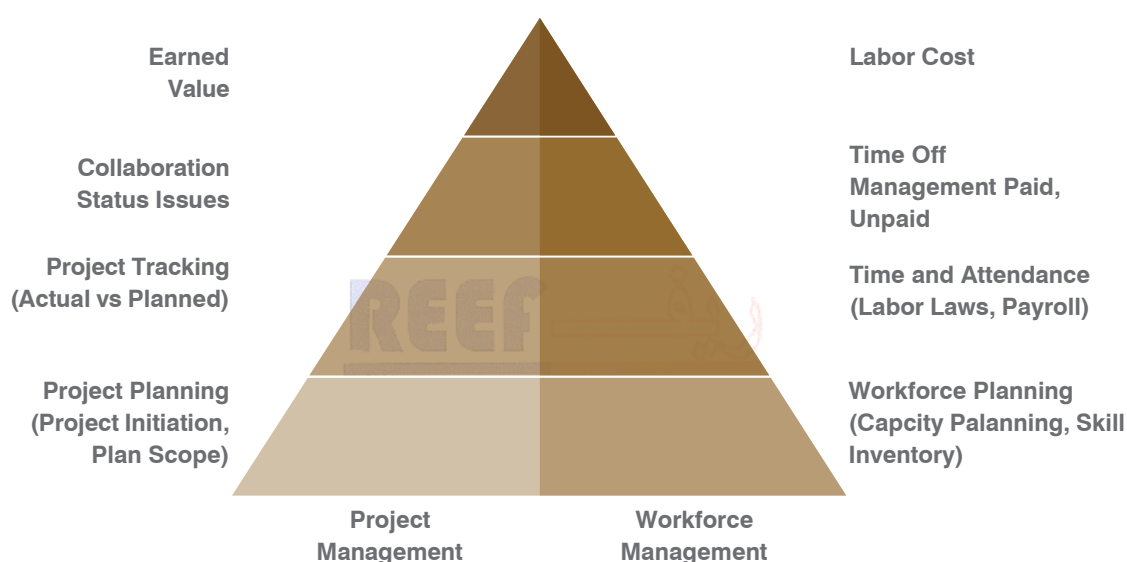
meet specified requirements in accordance with quality procedures. The verification of materials and services including purchase-supplied material, are the responsibility of the Receiving Department, Construction Department and Procurement Warehouse.

7. Measurement, Analysis and Improvement
 7. 1. Reef Co determines the monitoring, measurement, analysis and improvement processes including methods such as statistical techniques that are need to:
 7. 1. 1. Demonstrate conformity of the product and services.
 7. 1. 2. Ensure conformity of the Quality Management System.
 7. 1. 3. Continually improve the effectiveness of the Quality Management System.
 7. 2. Monitoring and Measurement
 7. 2. 1. Customer Satisfaction
 7. 2. 1. 1. Reef Co determines method for monitoring, measuring and improving customer satisfaction. This measurement of process performance shall include the analysis of customer complaints.
 7. 2. 2. Internal Audits
 7. 2. 2. 1. Reef Co establishes, implements and maintains documented procedures for a comprehensive system of internal audits at planned intervals to verify the effectiveness of the Quality.
 7. 2. 2. 2. The Administration & Property Manager and Construction Manager are responsible for administering the Internal Audit system per documented procedures. The Administration & Property Manager and Construction Manager develop a schedule for internal audits according to Quality Management system requirements and conducts unscheduled audits (internal and external) when reasons for such audits exist.
 7. 2. 3. Monitoring and measurement of Process
 7. 2. 3. 1. Reef Co implements and maintains comprehensive methods for monitoring and measuring the Quality Management System process, which demonstrate the ability of the processes to achieve planned results
 7. 3. Analysis of Data
 7. 3. 1. Reef Co utilizes statistical techniques and methods for the analysis of appropriate performance data collected to demonstrate the suitability and effectiveness of the Quality Management System.
 7. 3. 2. Methods used to generate relevant date are reviewed periodically to ensure the information provided relates to:
 7. 3. 2. 1. Customer satisfaction.
 7. 3. 2. 2. Conformity to product and service requirements.
 7. 3. 2. 3. Characteristics and trends of process and products and services including opportunities for preventive action.
 7. 3. 2. 4. Suppliers
 7. 4. Improvement
 7. 4. 1. Continual Improvement
 7. 4. 1. 1. Reef Co continually improves the effectiveness of its Quality Management System through the use of Quality Policy, quality objectives, audit results, analysis of data, corrective and preventive

- actions and management reviews.
- 7. 4. 2. Corrective Action
 - 7. 4. 2. 1. Reef establishes, implements and maintains documented procedures to initiate corrective and preventive actions for conditions adverse to quality.
- 7. 4. 3. Preventive Action
 - 7. 4. 3. 1. Reef established and maintains documented procedures to determine the appropriate preventive actions required to eliminate the causes of potential nonconformities in order to prevent their occurrence.

a. Construction and Project Management

Reef can provide pre-construction and construction phase services to the Project Owner in coordination with the Owner's Architect/Engineer to form the construction team.



Health and Safety Policy

Reef Al Garbia General Contracting Co LLC believes that the health, safety and welfare of employees are of prime importance and essential for the efficient operation of its undertakings.

Senior management recognize the need to conduct the business in a manner that is in line with current legislation and codes of practice and will ensure that appropriate arrangements are in place to comply with all legislative duties and enable the pursuit of continual improvement in its operations and management systems.

We undertake to discharge our statutory duties by:

- Identifying hazards in the workplace, assessing those risks related to them and implementing appropriate preventive and protective measures.
- Ensure OH&S objectives are set and periodically monitored
- Establishing a safe and healthy working condition by preventing work-related injury and ill health.
- Appointing personnel who have the skills, abilities and competence commensurate with their role and level of responsibility.
- Ensuring that the technical competence is maintained through the provision of refresher training as appropriate.

Reef Al Garbia General Contracting Co ensures that non-managerial consultation and participation is sought in terms establishing the OH&S Management System.

Within this policy we are committed to operating our Company under the disciplines and control of a Health and Safety Management System conforming to the international standard ISO 45001:2018, planned and developed jointly with our other Management Systems.

The Company and all employees have a joint responsibility to continually focus on improving the health and safety of all stakeholders.

This policy will be communicated to all employees and organizations working for or on our behalf. Employees and other organizations are expected to co-operate and assist in the implementation of this policy, whilst ensuring that their own work, so far as is reasonably practicable, is carried out without risk to themselves, others, or the environment.

This policy will be reviewed annually by top management and where deemed necessary will be amended and re-issued. Previous versions of this policy are archived.

This policy is available to relevant interested parties, upon reasonable request.



Managing Director

Reef Al Garbia General Contracting Co LLC.

Reef Co Safety & Loss Prevention Plan (ASLP)

INTRODUCTION

The purpose of this plan is to outline the Safety Organization and arrangements to be in place to enable the execution of works, under this Contract, with due consideration of the Environment, Healthy, Safety and Welfare of all involved parties.

This will be achieved by:

- Maintaining a safe and healthy working environment
- Preventing fatalities and lost time injuries both on and off the work sites.
- Preventing damage to equipment, facilities and potential effects on progress.
- Eliminating risk to the environment. Specific policies are implemented by



Reef Co, for client Contracts. The Safety plan meets the requirements of the contract between Client and Reef Co. All levels of Reef Co. are responsible to implement and enforce the provisions of this plan within their respective areas of accountability. This includes all subcontracted work also Inspections and audits will be performed to ensure compliance and data recorded to assess potential problem areas and progress

SAFETY FUNCTIONS

The safety and loss prevention function of the project organization is as follows;

- Health and Welfare
- Work Attire
- Transportation
- Fire Prevention/Protection
- First Aid
- Working Hours
- Work Permits

SITE ACTIVITIES

Reef Co and client perform certain Activities and methods of work at the sites which have particular safety requirements imposed on them. The list of this is as follows:

- Personnel Certification
- Excavations
- Existing Electrical Hazards
- Site Planning & House Keeping
- Formworks
- Welding & Cutting Operation
- Hand & Power Tools
- Lifting and Work at Height

SAFETY ORIENTATION

- Personnel Protective Equipment
- Fire Prevention & Protection
- Seek Safety Group on usage
- This plan is not a manual of rules and regulations. Safety policy requirements are clearly specified in Saudi Arab Government Laws and Client policies. This plan explains how

MANPOWER LIST

REEF AL GARBIA GENERAL CONTRACTING CO LLC. JV MITHAQ AL ANDALUS CO

JOINT VENTURE

MANPOWER LIST

SL	DESCRIPTION	QTY	
SITE STAFF			
1	Project Manager	1	
2	Construction Manager	1	
3	Operation Manager	1	
4	QA/QC Manager	1	
5	HSE Manager	1	
6	Purchasing Manager	1	
7	Project Accountant	1	
8	Admin Clark	2	
9	CAD Operator	3	
10	Planner	1	
11	Project Engineer	1	
12	Quantity Surveyor	4	
13	Project Coordinator	1	
14	Surveyor	3	
15	Document Controller	1	
16	Office labor	6	
17	Driver	5	
18	Store Keeper	2	
SITE OPERATION			
1	Site Engineer	8	
2	HSE Inspector	3	
3	QA/QC Inspector	7	
4	Civil Supervisor	5	
5	Mechanical Supervisor	4	
6	Civil forman/WPR	16	Skill Workers shall be increased during the progress
7	Carpenter	31	
8	Steel Fixer	64	
9	Mason	25	
10	LABOURS	35	
11	electrician	16	
12	Plumber	15	
13	Painter	17	
14	Mechanical Forman	14	Skill Workers shall be increased during the progress
15	Welder	18	
16	Fabricator	16	
17	fitter	19	
18	Skill Workers	18	
19	Driver	11	
20	flag Man	12	
21	Fire Watcher	16	

Note:

Manpower Resources are Direct Hired and Rental as per the site requirement

EQUIPMENT AND OPERATOR LIST
REEF AL GARBIA GENERAL CONTRACTING CO LLC.

EQUIPMENT LIST WITH OPERATOR

م	الإسم	رقم الهوية - الإقامة	الجنسية
1	محمد سليم محمد انوار	2428898650	باكستان
2	امير شهزاد محمد ارشد	2348421575	باكستان
3	اشرف خان ميرابات خان	2486744671	باكستان
4	دفتر الله كاوازه امير خان	2440299787	باكستان
5	محمد افضل عبد ال قيوم	2358756407	باكستان
6	ماتي الله باكيثا مير خان	2505830337	باكستان
7	مبارك حسين اساهد حسين	2407832985	باكستان
8	قدير اللل أجاب خان	2319963027	باكستان
9	شيلسان باديل روبندرن	2476924994	الهند
10	كامر ان كي لي خان	2477137042	باكستان
11	مراد صاحب الله خان	2511038354	باكستان
12	سراج خان ديل فاراش	2398852281	باكستان
13	والي الله اورنجزيب خان	2519668418	باكستان
14	كايمات الله شير افضل خان	2515849962	باكستان
15	اتيک مالانغ جان	2403148378	باكستان
16	خان خان ازمات	2342704760	باكستان
17	رحمة الله ولي	2301579625	باكستان
18	عزيز مراد جانراز	2353549419	باكستان
19	بوستان نور جان	2228933558	باكستان
20	محمد بستان قل خان	2439251170	باكستان
21	رحمة الله قامه جان	2276937683	باكستان
22	زاهد نور ا جان	2513200366	باكستان
23	ساكن الله شيخ الزمان	2301531261	باكستان
24	رسول داد خان غولادة خان	2321548923	باكستان
25	ارشد خان ال نزار عبد	2513683306	باكستان
26	مهران الله خان خان عبد الرب	2459800914	باكستان
27	غل عظيم عبد ال نذر	2400841496	باكستان
28	حمد الله محراب دين	2479868114	باكستان
29	كاسيف علي جمشد	2442675159	باكستان
30	سادات خان نيار خان الدين شاه	2492819517	باكستان
31	محمد والي خان جولادات	2513200689	باكستان
32	جاويد اقبال فضل الهي	2464130604	باكستان
33	عديل انجوم مستينير حسين	2509699589	باكستان
34	وقاص هايدر جرة محمد	2506703764	باكستان
35	محمد كوثر محمد اسلام	2465263347	الهند
36	محمد يوسف يونس	2428589721	الهند
37	محمد شاكيل احمد	2421952546	الهند
38	ناصر عباس سيد احمد	2283447668	باكستان

م	الاسم	رقم الهوية - الإقامة	الجنسية
39	محسين صديق محمد صديق	2356089553	باكستان
40	كاشف غلام قدير	2482539919	باكستان
41	قمر زمان احمد ايجاز	2509262198	باكستان
42	محمد بلال غلام نايي	2326554240	باكستان
43	ضيا يول كاتوناس	2412901635	باكستان
48	تاشوا عباس عريف علي	2414340576	باكستان

Equipment and vehicles

م	نوع المركبة	رقم اللوحة	سنة الصنع	اللون
1	قلابة: مرسيدس	ا ر س 2232	2011	رصاصي
2	قلابة: مرسيدس	ا ا س 4890	2000	ابيض
3	قلابة: فولفو	ا ب ن 2076	2004	ابيض
4	قلابة: فولفو	ا ر ر 6036	2008	ابيض
5	قلابة: فولفو	ا ر ر 6041	2008	ابيض
6	قلابة: فولفو	ا ا ا 9129	2007	ابيض
7	قلابة: فولفو	ا ر ر 6038	2008	ابيض
8	قلابة: فولفو	ا ه ح 3822	2006	أخضر
9	قلابة: فولفو	ا د ع 1884	2005	احمر
10	قلابة: مرسيدس	ا ر ص 3367	2007	ابيض
11	قلابة: فولفو	ا ا د 3173	2008	ابيض
12	قلابة: فولفو	ا ر ر 6039	2007	ابيض
13	قلابة: فولفو	ا ر ر 6047	2005	اخضر غامق
14	قلابة: فولفو	ا س ن 2122	1995	ازرق
15	قلابة: مرسيدس	ا ح ي 8835	2008	ابيض
16	قلابة: مرسيدس	ا ب ي 2080	2002	ازرق
17	قلابة: مرسيدس	ا ه ح 5871	2000	ابيض
18	قلابة: مرسيدس	ا ا ر 4396	2006	بنفسجي

19	قلابة: مرسيديس	ارر 3942	2007	ابيض
20	قلابة: مرسيديس	ارو 2431	2002	ابيض
21	قلابة: مرسيديس	باس 4814	2006	احمر
22	قلابة: مرسيديس	اي س 9051	2004	اصفر
23	قلابة: مرسيديس	ار م 2452	2006	ازرق
24	قلابة: مرسيديس	ب ح ط 3803	2005	فضي
25	قلابة: مرسيديس	ار ل 3213	2006	ابيض
26	قلابة: مرسيديس	ار ل 3204	2005	ازرق
27	قلابة: مرسيديس	ار ل 3213	2006	ابيض
28	قلابة: مرسيديس	ا ح ن 6568	2007	ابيض
29	قلابة: مرسيديس	أ را 3626	2005	ابيض
30	قلابة: مرسيديس	ا و ط 2370	2006	ابيض
31	قلابة: مرسيديس	ا ن ي 4668	2004	ارزق
32	قريدر	96U05195	1983	احمر غامق
33	ناقلة المياه: مرسيديس	ا ب م 1219	1999	ابيض
34	ناقلة المياه: مرسيديس	ار م 3724	2002	اصفر
35	كوم استو: جرافة	ا ا ا 7194	2005	اصفر
36	كوم استو	ا د م 4767	1982	اصفر
37	ليوفونق: وييل لودار	ا ا س 5118	2012	ابيض
38	ناقلة ديزل: ايسوزو	ا ب ا 9853	2008	برتقالي
39	حفارة: دوسان	ا ب ي 5646	2012	اصفر
40	كتيلر	ا ب ي 2094	2009	برتقالي
41	رولار كومباكتار	ا ح م 1644	2013	برتقالي
42	وييل لودار: دوسان	ا ا ا 7378	2019	برتقالي
43	جرادار	86960	2008	برتقالي

Engineering & Projects Management Department

Engineering Services:

Our company is dedicated to provide to its prestigious clients with the best possible high class engineering Design and pre-engineering services in a best possible economical cost to their projects using the skills of Our highly professional and skilled designers, ensuring and maintaining the quality and minimal future Maintenance cost of the projects. Our Scope of Services is:

- Detailed Design Engineering Services (Civil, Structural, Piping, Electrical, Instrumentation, and Process)
- Site Inspection and Site Preparations
- Preparation of All kinds of Engineering Paper Works (Scope of Works, Engineering Drawings, Estimation, QA/QC & Safety Standards.)
- Testing Commissioning and Trouble Shooting Services

Our Mission

“Conversion Client's Requirements in a Professional and Quality Oriented Design” &
“Engineering Solutions with the Adaptability of Future Needs”

Project Support & Execution Services:

We have a highly professional & qualified group of people to perform all types of services and execute all.

Types of projects under the management of our prestigious clients.

Our Scope of Services is:

- Execution of All types of (Civil, Structural, Piping, Electrical, Instrumentation)

Projects under the Client's management.

- Execution of All types of projects even on the supply of manpower and temporary equipments only.
- Preparation of All types of Project Drawings, Shop Drawings and other project related documentation as per client's instructions.

Turn Key Project Management

As a contractor

As an Independent Contractor we are offering Complete Turnkey Solution Services in following fields:

- Turnkey Short Form Projects Execution
(Mechanical, Civil, Structural, Electrical, Instrumentation)
- Turnkey Long Form Projects Execution
(Mechanical, Civil, Structural, Electrical, Instrumentation)

Our project execution program has the following steps:

- Pre Award Project Management Activities
- Post Award Project Management Activities

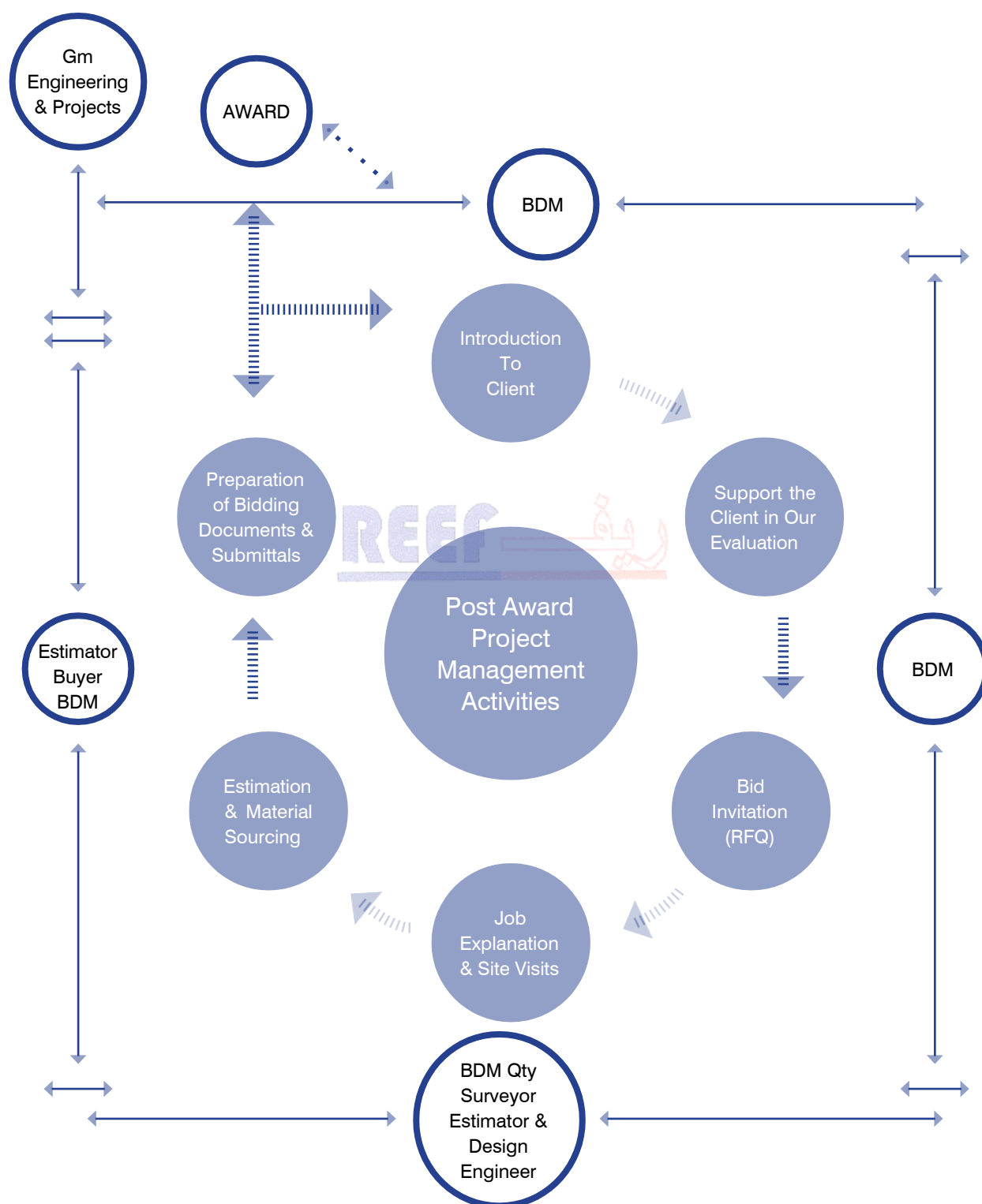
We have designed our post award project management activities to ensure our clients the following

Activities:

- Our Comprehensive Introduction to Clients at their door steps. The aim is to facilitate them in Locating a pain's taking Industrial Services provider company
- Providing all necessary information to the Clients to evaluate us Technically and Commercially as Per their criteria of Technical and Commercial Evaluation. The idea is to save the time of our valued Clients in their attempt to evaluating our strengths and weaknesses as an Industrial Services Provider Contracting Company.
- To entertain the every Bid Invitation Properly & Professionally.
- Getting first hand knowledge about the Client's requirements, provide them necessary solutions if Required during the Job Explanation Meetings. The aim is to develop the clear understandings about The Job, Clients requirements in terms of QC/QA and Safety standardsto be followed during the Execution.
- Estimation the aim is to locate quality material from the Client's Approved Source or to provide the Cost effective equal quality material from the equal Approved Source.
The essence of this activity is
To provide Quality oriented Cost Effective Price to our valued clients.



Project Management Activities Post Award (flow diagram)



After Award Project Management Activities

Our project execution program has the following steps:

- Project Management
- Project Plan
- Material Procurement and Expediting
- Execution of Work
- Safety and Housekeeping

Project Management

The first and foremost step in any Project Execution is to design a perfect

Project Management Module

Which our designing and system engineering team are used to design as per the first hand knowledge of the Client's requirements or as per the agreed solution proposed by our team which ever the case.

Our project management procedure is consists on the following steps discussed as follows:

Architectural design and detailed Engineering plan is the first step in Project Management activity where The initial perspectives of any civil contract are presented including the detailed plans for all disciplines for The smooth execution of projects and being used for identification of materials needed in the project.

Estimation is the second step in Project Management activity i.e., based on the detailed plan we can get an idea that how much the capital is required to execute the particular project. For this we have experienced engineers and technically skilled and trained staff to estimate the entire project's cost as good (low) as possible but not at the cost of Quality.

Scheduling is the third and important step because in this way we first divide the whole job into different stages and then develop the whole program that on which day we are going to execute the stages of works. It also helps us to specify the time span of the whole project.

Cost Controlling is the 4th step in which our well-experienced engineers and commercial staff evaluate the initial estimate of the projects and try to reduce the cost of the said project without compromising on the quality standards. In this attempt we always keep the quality standard and specification required by the client in our mind. In other word our motto is:

“Control the Cost up to the Extent that Quality of Work shall not been Questioned”

Project execution where the mobilization will start and the Engineering Surveyor will do first the technical works in surveying the right area dimension for the project. Right after the survey be finished and the materials and equipment are mobilized the proper project construction will start.

Progress Monitoring is also one of the very vital steps during the project execution just to find out the progress, to know that is there any difference between the actual execution and scheduled plan, so that in case of any difference we can control it without affecting the total time span of the project that was committed with the client. This will help us to: “Materializing commitments on time.”

Material Expediting and Inspection: We develop a complete program prior to our start to manage the Supply & chain relationship and on site inventory management system. The material required during the Different stages of the job, as per the required quality

and specification (after get it approve from the client Side) assured to be in our site storage 5 days prior to its use so that we and our clients can insure its specifications and quality prior to its use.

Engineering Plan Review is one of the important tasks to find out if there is any unexecuted works in the project design remained or not.

Construction liaison that is to prepare the construction's drawing and detailed plan, get them approved from the government agencies and give these to the engineering staff who are going to utilize them on the construction site. It is also our practice to initiate the general and clear instructions to our Field Engineers, Supervisors and Other field staff who are going to do the job on site in order to achieve the optimum level of efficiency and progress from them.

The management of the site and its modification is the last but one step and a very vital also, just to insure that our work place is well equipped with all necessary tools, equipments, work facilities and even the living facilities of our field staff which are necessary at the particular stage of the project well on time. And modify these as per the changing requirements of different stages time to time. The main aim is to: "Arrange the facility and equipment prior to the occurrence of its requirement just to maintain the flow of work."

The development of Field Inspection Program and preparation of Project Manuals is the last task of Project Management process. Field inspection is important to supervise the whole project activity at the different stages. The project manual is important to make it clear to all the operational peoples who are going to start it.

The purpose is:

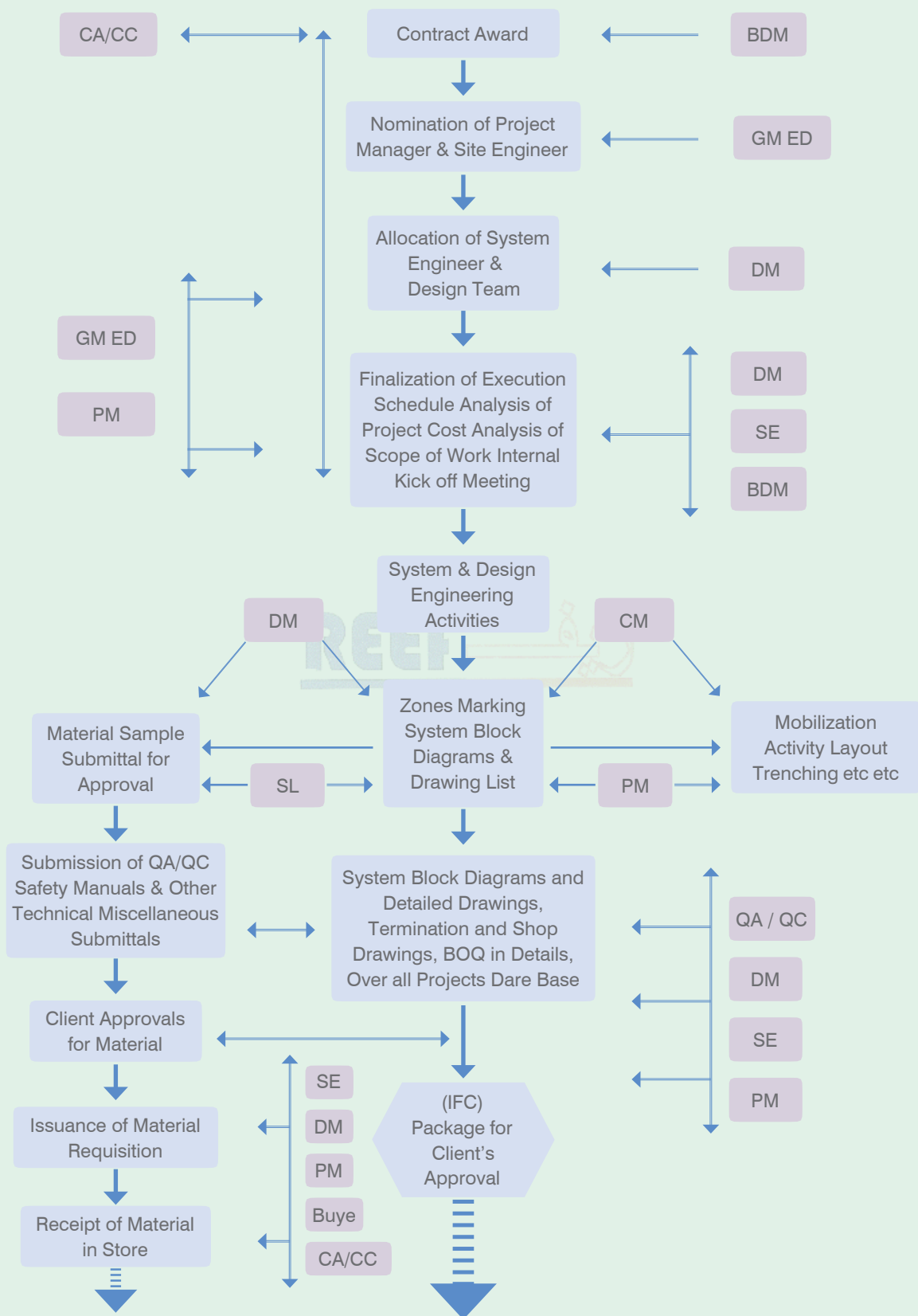
"Just to monitor the activity and control it well on time."

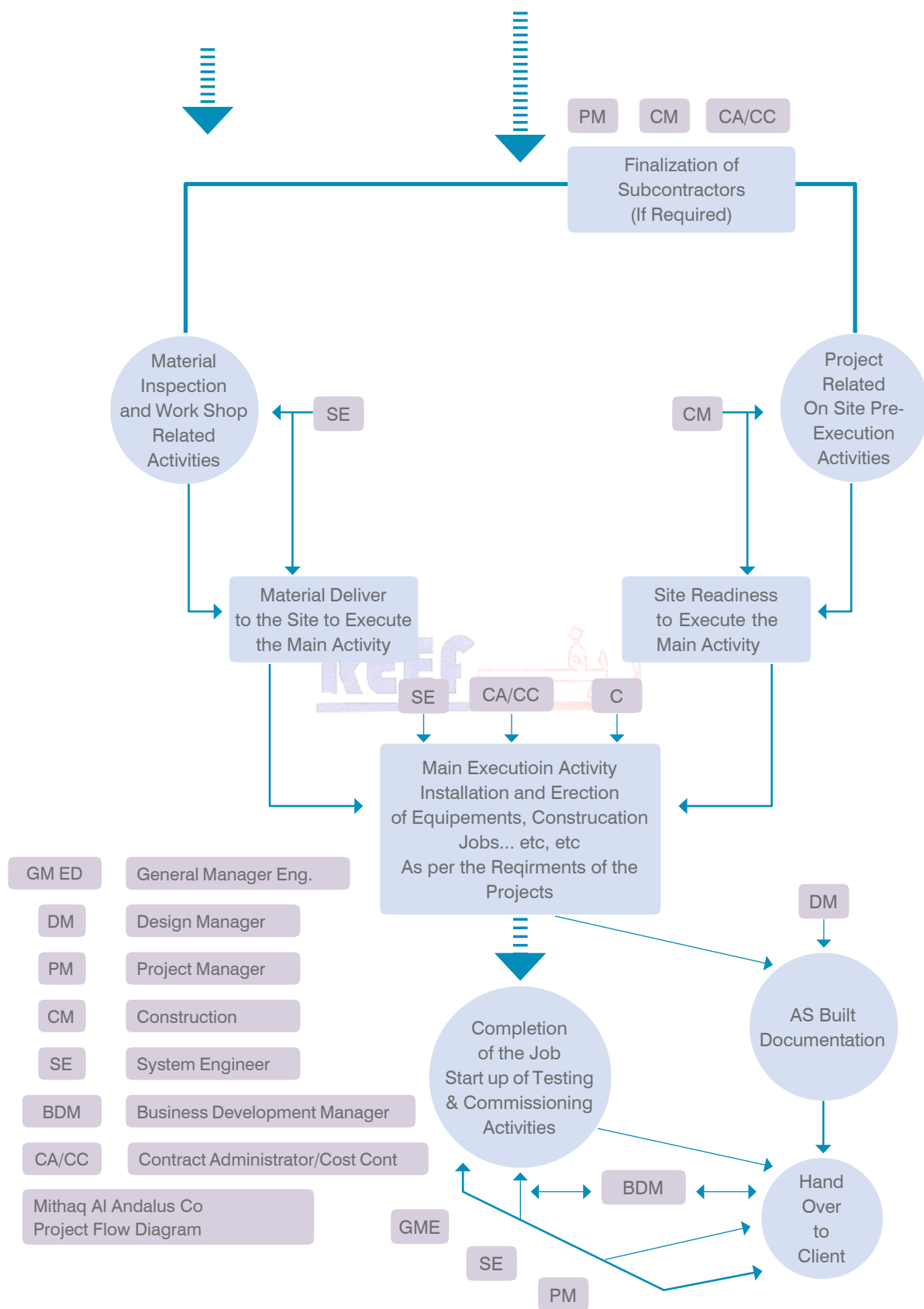
Detailed cost break down of the project to compare it with the estimated cost in order to verify the Accuracy of the estimation and also try to explore some other possibilities to control the cost but not the cost of „quality’.

Preparation of Budget and Payout Analysis is the next step to monitor the whole expenses of the project. It is necessary in order to control the whole cost of the project. It must be also explained that at what stage how much capital required and what should be its sources.

Our detailed on site Project Flow Chart has been designed based on above philosophy of Project Management.







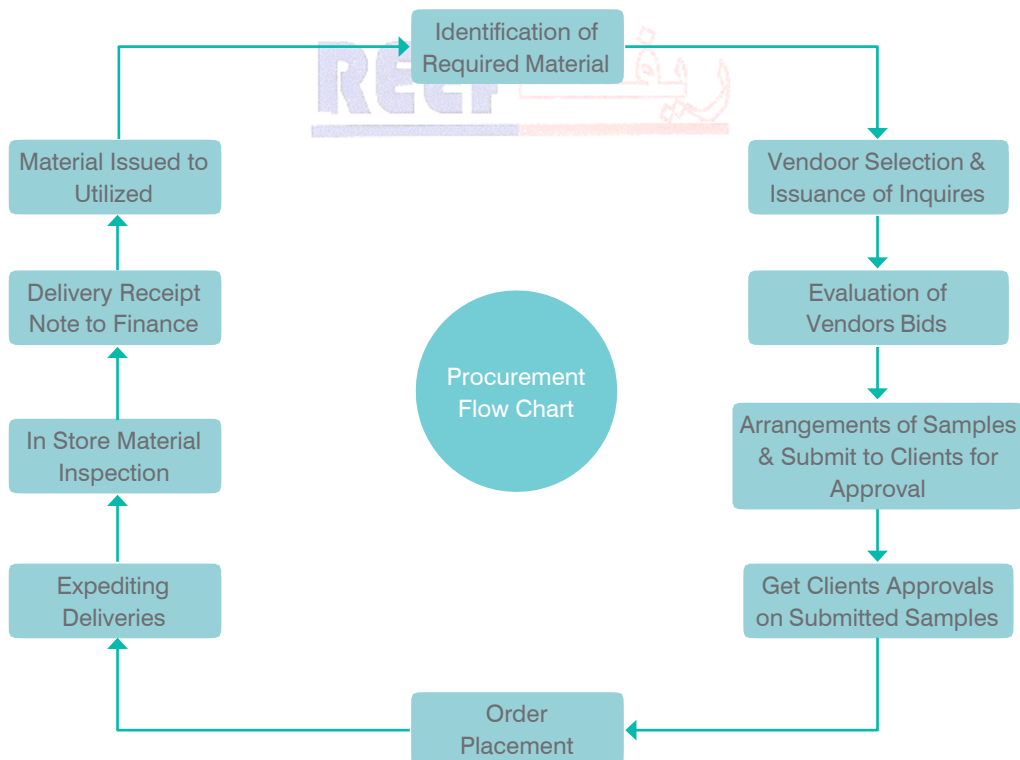
Reef Contracting Co. Project (flow diagram)

Material Procurement

We have designed our procurement system based on the philosophy that:
It must insure all the goods and material which we are going to be procure shall be as per the specified Requirements of our clients must be available at the work place prior to its usage time.

Based on the above idea our procurement procedures are consisting on:

- Identification of requirement
- Selection of vendors and inquire the quotations
- Evaluation of BID
- Arrangements of Samples for Client's Approval
- Getting Client's Approval
- Order Placement
- Expediting deliveries
- On Receipt, material inspection and status report
- Delivery Note forwarded to Finance department for Invoice Clearance
- Material Issued from store to be Utilize



Our main aim in the procurement procedure is to follow the specifications and quality standards, which we have received, from the buyer's side with the project. However we have tried our best to reduce the project cost as low as possible but we prefer the quality of work first and then the cost effectiveness. In this procedure first of all our technical staff will identify the whole requirements after the minute examination of the project, papers and plan sites. Then they forward the material requisition along with the complete specification and quality standards to our procurement department.

In the second steps of our Procurement Procedure, we will select the vendors of good reputation by getting the information about them and by visiting their shops, go downs and other facilities. Good reputation means that the supplier must have the ability to handle the sizeable quantity of required materials, must have the solid financial base and good connections with the foreign exporters also. And above all he must offer the comprehensive warranty period of his goods and services. On the basis of our survey we decide that which vendor has a good quality material as per the requirement of our clients. Then the process of asking quotations has been started. In this process we called the quotation from at least 3 of our selected vendors.

In the 3rd step, the process of evaluation of BIDS has been started. In this step we give primary importance to those vendors who have good quality materials and the cost effectiveness comes at secondary level.

After the BID approval we conduct a proper shop inspection in order to verify the quality and Specification of the goods at the supplier's location. In this process along with the evaluation of price we have also tried our best to give the preference to Saudi suppliers. Then getting the samples for client's approvals. After the sale man samples get it approved by the Clients we will issue the purchase order. In the last step of our material procurement procedure, we expedite the deliveries from the vendor's location to our location, we always try to receive all the materials and equipment required to be at our location 5 days prior to its use so that we can inspect it minutely and transfer it to our client's location well on time.

The final step is the minute inspection of the material on receipt at our location, in order to verify its quantity, quality and specifications and develop a report for the top management as well as to the client if required.

Safety and House Keeping

Reef Co is aware of the potential hazard associated with its activities and committed to provide maximum assurance towards the safety of its personnel and safe operation of its activity. All employees have to be conscious about the importance of their individual roles to be played in the implementation of our company safety policy, which is based on following basic idea;

Provide a safe working environment to our clients and accident free working place to our workers we are conducting our operations in a way that protects people, property, workers, communities and the environment.

Our goal is to prevent the accidents A root cause of injuries and occupational illnesses & Save the loss of man hours.

Safety instructions are issued for individual employees for their protection and must be adhered to it all times and in all jobs assignments.

All employees should do everything reasonable and necessary to eliminate accidents. All accidents must be reported, investigated and necessary action will be taken to prevent similar occurrence in the future. Housekeeping is one of the vital activities which we are concerning, that means we are responsible to hand over the project back to client in a clear and good conditions, we use all hygienic measures in this attempt.

REEF AL GARBIA CONTRACTING CO
PROJECT LIST

ONGOING PROJECTS						
SL	COMPANY NAME	PROJECT ACTIVITIES	Completion %	Amount	YEAR	LOCATON
1	KING ABDULLAH ECONOMIC CITY REXOS HOTEL	INFRASTRUCTION OF PIPING FIR FIRE WATER LINE AND COOLING WATER	85%	3.5M	2025	KING ABDULLAH ECONOMIC CITY
		FABRICATION AND WELDING OF PIPES AND FITTINGS				
		INSTALLATION VALAVES				
		INSTALLATION OF PUMPS				
		INSTALLATION OF FIRE HYDTRANT				
		INSTALLATION OF HOSE CABIN				
		INSTALLATION OF FLOW METER				
2	AR RIYADH NEW MOBILITY	WATER FEATURE STEEL STRUCTION AND INSTALLATION	98%	12M	2023-2025	RIYADH
	METRO LINE -3 METRO	CONSTRUCTION OF PEDESTRIAN BRIDGE PIER FOUNDATION				
		PUMP STATION AND STORM LINE AND DRAINAGE SYSTEM				
		ASPHALT AND BOUNDARY WALL				
		CAR PART FOUNDATON				
SUCCESSFULLY COMPALETED PROJECTS						
SL	COMPANY NAME	PROJECT ACTIVITIES			DURATION	LOCATON
3	Saudi Aramco-Juymah NGL	Soil Development and Site Preparation for Tank Farm Construction	100%	34M	Feb 2020 to 2022 Dec	Juymah NGL Plant Eastern Pro
	Abdullah Al Dossary Co	Excavation and Backfilling				
		Boundary Fence				
		Access Road and Demolition of Existing Pond and Building				
4	INOCHEM SODA ASH & CALCIUM CHLORIDE PLANT-China Chengda Engineering-CRITICAL ENGINEERING- CO.	Storage Steel Tank Erection	100%	3M	Jan 2022 Oct - 2022	Ras Al Khair Jubail
		Fabrication and Welding				
		Installation of Handrail				
		Installation of StairCase				
		Installation of Nozzles and Manhole				
5	CONTINETAL TRADING AND CONTRACTING CO LTD	Washout Work for MGS-2 Pipe Lline Aramco	100%	13M	2020-2021	AD DAWADMI
		Installation of RipRap Mattress Inclusive of Stone with wiremesh				
		Installation of Concrete Works with Wiremesh				
		Installation of Cabion with Galvanize Steel Boxes				
6	SAUDI INVESTMENT RECYLING CO. (SIRC & CDW)	SITE PREPARATION AND EARTH WORK	100%	11M	2020 MAY TO JULY 2021	RIYADH NORTH AL KHAIR PROJECT
	FACILITY CONSTRUCTION	FENCING AND GATES				
		TANK FOUNDATION				
		BUILDING FOUNDATION AND STRUCTURE WORKS				
		ELECTRICAL DUCT BANK & ELECTRICAL MANHOLE				
		DRAINAGE SYSTEM AND STORM WATER MANHOLES				
		ROAD ASHPALT WORKS				
7	MAADEN-TDP CO.	NEW HEAP LEACH SITE PREPARATION	100%	5M	2020-JUNE TO DEC-2020 6 MONTHS	AS SUQ GOLD MINE
	NEW HEAP LEACH CONSTRUCTION	EARTH WORK CUTTING AND LEVELING				
		BERM CONSTRUCTION AND SHAPING				
		HDPE PIPE AND LINER INSTALLATION				
	REEF AL GARBIA EST	CRUSHING AND GRAVEL MATTING				

8/21/2025

REEF AL GARBIA CONTRACTING CO
PROJECT LIST

ONGOING PROJECTS

SL	COMPANY NAME	PROJECT ACTIVITIES	Completion %	Amount	YEAR	LOCATON
8	GEMS WAST CHEMICAL TREATMENT PLANT JUBAIL	CONSTRUCTION OF INFRASTRUCTURE OF RECYLING PLANT				
		STORAGE TANKS 36Nos	100%	26M	2017-2020	JUBAIL
		Pipe Track Installation				
		Pipe Networks Steel and PVC, UPVc				
		Fire fighting Pipe Lines and Pump Stallation				
		Fire Hydrant Installation and Valve Installation				
		Flowmeter and Fire Alarm Installation				
		Tank Foundation				
		Structural Building Erection and Clading Installation				
		Building Finishing Works				
		Electrical Duck Bank & Manholes				
		Underground Networks (Drainage, Sewage, Storm Line)				
		Boundary Fence and Gate Installation				
		Evaporation Pond Constructoin and HDPE Liner Installation				
		Earth Works and Soil Improvement				
9	GEMS WAST CHEMICAL TREATMENT PLANT DAMMAM	CONSTRUCTION OF INFRASTRUCTURE OF RECYLING PLANT				
		Rehabilitation of Pipes networks	100%	30M	2018-2019	DAMMAM
		Installation of Valves and Fittings				
		Installation of Fire Fighting Tank Nozzles				
		Installation of Fire fighting Distribution				
		Plant Springler System				
		Flowmeter and Fire Alarm Installation				
		DIWMC - Concentrated Acid Holding Tanks 2 TK-03050 Constructed				
		DIWMC - OWS System Piping Works				
		DIWMC- OWS- Process Water Line and Process Air line, Removal of Existing overflow line				
		DIWMC - MBR Tank Strengthning Supports				
		DIWMC - FRT Piping Network				
		DIWMC - RRT Staircase Fabrication & Installation				
		HOMA - Steel Structure Storage Building-1&2 Fabrication & Erection				
10	GEMS WAST CHEMICAL TREATMENT PLANT JOHFA	IWMC MDAS System Concrete Slab Foundation	100%	0.7M	2018-2019	JOHFA -RAIBGH
		IWMC MDAS Sluge mixing pad modificatation				
		IWMC Piping and Equipment Installation				
11	National Environmental Preservation Company (BeeAh)	LANDFILL CONSTRUCTION AND EMBARKMENT AND RAMP	100%	3.8M	2018-2019	JUBAIL INDUSTRIAL AREA
		EXCAVATOIN AND BACKFILLING				
		ACCESS ROAD AND BUILDING ASPHALT WORKS				
		HDPE LINE INSTALLATION				
		SECURITY FENCE AND GATE INSTALLATION				
12	GEMS WAST CHEMICAL TREATMENT PLANT YANBU	SITE PREPARATION AND FENCING WORK	100%	3.7M	2017 to 2018	YANBU AL-SHINAYA RC
		EATH WORK (BERM CONSTRUCTION & LAND FILLING)				
		TANK FOUNDATION				
		PIPE STRUCTURAL FABRICATION AND ERECTION				
		SAND BLASTING AND PAINTING OF TANKS				
		DYKE WALL				
	REEF AL GARBIA EST	BOUNDARY WALL CONSRUCTOIN				

8/21/2025

Civil Department



Civil Works and Constructions are main activity of Reef Co. Construction and Engineering is the Specialty of the company. Construction department is responsible for civil, mechanical, electrical and instrumentation works. The civil construction work that we undertake reflect our expertise in this domain. We construct different types of Infrastructure Buildings and residential and commercial buildings, Earth Works, Landfill, Underground utilities drainages system and road works as per the clients' requirements. We bring in use the best quality construction materials that are sourced from reliable vendors. One of the salient tasks of construction department is the compilation and distribution of work procedures. These procedures describe in detail method of execution for all civil, mechanical and other works.

In each field of activity Reef Co Construction and Engineering Company assign a supervisor to ensure the construction and erection are executed in strict compliance with the specification, drawings, standards and other contract documents. Prior to handing over the complete project, in case the client required, Reef Co can assist client in commissioning and startup. This would offer the opportunity of training to client personnel who later would be responsible for plant operation. Construction dept is fully equipped with heavy machinery and equipment together with related personnel. Reef Co Construction teams perform all required activity for implementation of an Oil, GAS and Petrochemical plants, Buildings and Industrial factories, Infrastructure of Metro Lines, Earth works.



Construction activities consist of the following items:

- Earth Works and site preparation
- Soil Improvement
- Landfill Construction
- Metro Line Infrastructure
- Excavation and Backfilling
- Concrete Foundation
- Underground Drainage System
- Underground Duct bank
- Electrical Manhole
- Drainage Manhole
- Pipe support foundation
- Grading
- U/G cable root
- Concrete paving
- Pole lighting concrete
- Gravel paving
- Earth rod manhole
- Road
- Concrete cable trench
- Security Fencing Works
- Dike wall and Retaining Wall
- Pump Station
- Building construction



Earth Work Construction

Reef Co Earthworks Construction

Reef Al Garbia Contracting Company provides complete earthworks construction solutions, delivering safe, efficient, and cost-effective services for a wide range of projects across the Kingdom of Saudi Arabia. With extensive experience and modern equipment, the company ensures precision and reliability in every stage of earthwork

Our Earthworks Services include:

- Site Preparation & Clearing – removal of vegetation, debris, and unsuitable materials to prepare sites for construction.
- Excavation & Trenching – bulk excavation, grading, and trenching works for foundations, utilities, and infrastructure.
- Backfilling & Compaction – filling and compacting soil to achieve the required ground levels and stability.
- Cut & Fill Operations – leveling uneven terrain to meet project specifications and optimize material use.
- Road Works & Embankments – construction of access roads, embankments, and platforms for industrial, commercial, and civil projects.
- Landfill & Pond Construction – development of engineered waste management facilities, evaporation ponds, and reservoirs.

Why Choose Reef Al Garbia?

- Skilled workforce with proven experience in large-scale earthworks.
- Fleet of modern equipment and machinery to deliver projects on time.
- Commitment to safety, environmental sustainability, and quality standards.
- Flexible and cost-effective solutions tailored to each client's needs.

From small site preparations to major infrastructure developments, Reef Al Garbia Contracting Company is a trusted partner for all earthworks requirements, supporting industrial, commercial, oil & gas, and civil construction projects.



Security Fence Work

Reef Co – Security Fence Works

Reef Al Garbia Contracting Company specializes in the design, supply, and installation of security fencing systems for industrial, commercial, oil & gas, and infrastructure projects across the Kingdom of Saudi Arabia. Our fencing solutions are built to provide safety, access control, and durability while meeting the highest quality and security standards.

Our Security Fence Services include:

- Perimeter Fencing – supply and installation of chain-link, welded mesh, and high-security fencing for industrial compounds, warehouses, and restricted zones.
- Boundary Walls & Barriers – construction of reinforced concrete walls, precast boundary walls, and crash barriers.
- Gates & Access Control – fabrication and installation of heavy-duty sliding gates, swing gates, and turnstile systems integrated with security access points.
- Razor Wire & Barbed Wire – installation of additional deterrents for enhanced perimeter security.
- Anti-Climb Systems – advanced fencing solutions to prevent unauthorized entry.
- Temporary Fencing – supply and installation of movable fence systems for construction sites and events.

Why Choose Reef Al Garbia?

- Expertise in delivering security fencing for government facilities, oil & gas plants, industrial zones, and private developments.
- Skilled workforce and advanced equipment ensuring precise installation and long-lasting performance.
- Compliance with Saudi Aramco, Royal Commission, and international security standards.
- Tailor-made solutions designed to meet specific project requirements and budgets.
- From basic boundary fencing to high-security installations, Reef Al Garbia Contracting Company provides reliable and cost-effective fencing solutions that safeguard assets, facilities, and communities.



Concrete Foundation Works

Reef Al Garbia Contracting Company provides comprehensive foundation construction services for industrial, commercial, residential, and infrastructure projects across the Kingdom of Saudi Arabia. With expertise in handling challenging soil conditions and complex structural requirements, the company ensures safe, durable, and cost-effective foundation solutions that form the backbone of every project.

Our Foundation Works include:

- Shallow Foundations – construction of isolated footings, combined footings, strip foundations, and raft foundations.
- Deep Foundations – pile foundations, drilled shafts, and piers for heavy structures and weak soil conditions.
- Equipment & Tank Foundations – reinforced concrete bases for heavy machinery, storage tanks, and industrial equipment.
- Structural Foundations – foundations for buildings, bridges, substations, and other civil structures. Dyke Wall foundation
- Special Foundations – design and execution of foundations in difficult terrains, coastal areas, or areas with high groundwater levels.
- Excavation, Backfilling & Compaction – precise site preparation to achieve required ground levels and bearing capacity.
- Concrete Works – supply, placement, and finishing of high-quality concrete to meet project specifications.

Why Choose Reef Al Garbia?

- Proven expertise in both conventional and specialized foundation systems.
- Modern equipment and experienced engineering teams ensuring accuracy and efficiency.
- Adherence to international quality and safety standards.
- Customized solutions to meet the structural needs and geotechnical conditions of each project.
- Reef Al Garbia Contracting Company delivers foundation works that ensure stability, longevity, and structural integrity, making us a trusted partner in the success of diverse construction projects.



Underground Drainage System Pipe Network

Reef Al Garbia Contracting Company – Drainage & Sewage Line Works

Reef Al Garbia Contracting Company provides complete drainage, stormwater, and sewage line construction services to support reliable infrastructure for industrial, commercial, oil & gas, and residential projects. With expertise in underground utilities and pipeline systems, we ensure safe, durable, and environmentally compliant solutions.

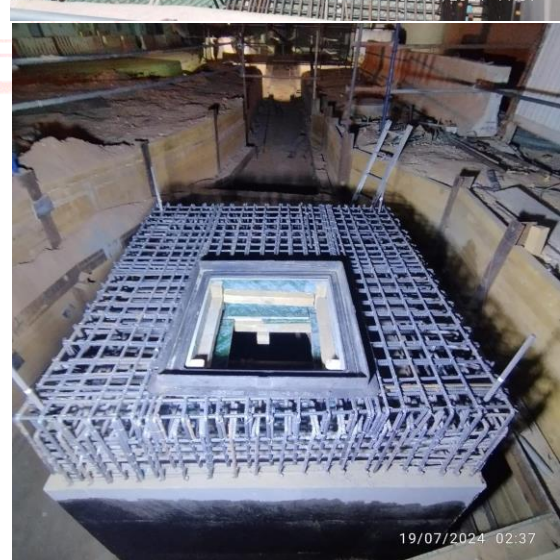
Our Services include:

- Stormwater Drainage Systems – design and installation of open channels, culverts, catch basins, manholes, and underground pipelines to manage surface runoff and prevent flooding.
- Sewage Collection Networks – construction of gravity sewer lines, pressure mains, and pumping stations for efficient wastewater management.
- Pipeline Installation – supply and laying of **HDPE, GRP, uPVC, DI, and RCC** pipes of various diameters.
- **Manholes & Chambers** – construction of precast and cast-in-situ manholes, inspection chambers, and junction boxes.
- Connection Works – tie-ins with existing municipal and industrial networks, including testing and commissioning.
- Excavation, Bedding & Backfilling – proper trenching, pipe bedding, and compaction to ensure pipeline stability.
- Maintenance & Rehabilitation – repair, replacement, and upgrading of existing drainage and sewage lines.

Why Choose Reef Al Garbia?

- Proven expertise in large-scale drainage and sewage infrastructure projects.
- Skilled workforce and modern equipment ensuring safe and efficient underground utility installation.
- Strict compliance with Saudi Aramco, Royal Commission, and municipal authority standards.
- Commitment to safety, quality, and environmental protection.

Reef Al Garbia Contracting Company delivers end-to-end solutions for drainage, stormwater, and sewage systems, ensuring sustainable infrastructure that supports industries, communities, and the environment



Mechanical Department

We handle many types of mechanical engineering works such as structural works, Pre-engineered Buildings, pipe line, storage tanks, scaffolding and access equipment, surface preparation and painting, rotating equipments. Etc. Quality, safety and commitment to excellence fuelled by the desire to expand empowers Reef Co to extend its services to Oil sector, Government Sectors as well as Private Sectors. Reef Co is growing as a major force in the Oil and Gas Industries through strategic alliances with some of the international reputed companies. We shall employ the finest professionals and skilled workers to aim for the success of all projects we undertake. Reef Co will conduct its business in parance with good international practices and will provide safe and healthy working conditions for its employees.



Piping works for Oil and Gas, Infrastructure work

Reef Al Garbia Contracting Company – Piping Works
Reef Al Garbia Contracting Company delivers comprehensive piping solutions for industrial, oil & gas, commercial, and infrastructure projects. With expertise in multiple piping systems and materials, we provide safe, durable, and high-performance installations that meet international standards and project-specific requirements.

Our Piping Works include:

- **HDPE (High-Density Polyethylene)** Piping – water distribution, sewage networks, irrigation, and underground utilities with butt-fusion and electrofusion joining.
- **Stainless Steel (SS) & Carbon Steel (CS)** Piping – process pipelines, pressure lines, and utility piping for oil & gas, petrochemical, and industrial plants.
- **GRP (Glass Reinforced Plastic)** Piping – corrosion-resistant systems for water transmission, seawater cooling, chemical handling, and drainage networks.
- **uPVC & PVC Piping** – cost-effective solutions for potable water, drainage, and light industrial applications.
- **Firefighting Piping Systems** – fabrication and installation of hydrant lines, sprinkler networks, and pump connections, compliant with NFPA standards.
- **Oil & Gas Pipeline Works** – flowlines, utility piping, and process systems for upstream, midstream, and downstream facilities.

Scope of Services:

- Design, supply, fabrication, and installation of



piping networks.

- Welding, jointing, hydrotesting, flushing, and commissioning.
- Construction of valve chambers, pipe supports, and access points.
- Tie-in works and integration with existing networks.
- Maintenance, modification, and rehabilitation of existing pipeline systems.

Why Reef Al Garbia?

- Multi-discipline expertise in both metallic and non-metallic piping systems.
- Skilled workforce and certified welders for critical pipeline works.
- Compliance with Saudi Aramco, Royal Commission, NFPA, and international standards.
- Proven track record in oil & gas, utilities, and infrastructure projects.

Reef Al Garbia Contracting Company provides end-to-end piping works that ensure operational reliability, safety, and efficiency across diverse sector.



Reef Co has developed and registered a wide range of ASME section IX weld procedures including manual semiautomatic and machine weld process. Our fabrication abilities include the use of mild steel, austenitic, stainless steels, low temperature carbon steel, 1.25% chrome, 2.25% chrome, P91, specialty alloys including Inconel, Monel, 6Mo, Duplex stainless steel, Titanium and dissimilar Combinations are all covered with some procedures qualified up to 8" in thickness. The company holds AWS, ASME, certification for the fabrication of pressure lines

Our mandate is to continually evaluate and incorporate new processes and alloy combinations to provide greater capabilities and services to meet our customer's changing requirements. The Amaco team is comprised of experienced management, skilled crafts men and dedicated administrative support who are all committed to delivering industry leading customer satisfaction

This department deals primarily with Piping Systems, in accordance with Client specifications, and ASME B31.1, and B31.3 codes. This department is capable of specifying piping Component Classes, as well as overall layouting, piping engineering, detailing, all the way down to Isometrics and MTO. Capability of 2D, and 3D is available for the piping. 2D AutoCad is used. 3D CadWorks is Used. This department performs stress analysis, and pipe support designs for the piping system Typical deliverables.



Structural Steel



Reef Co fabrication has over Thirteen years' experience in fabrication, handling, and processing structural steel. With over 1,000 sq. ft. of facility space dedicated to structural steel fabrication, we can offer a wide array of services. We have full time QA/QC managers, certified welders, trusses, AutoCAD, skids and bases, customer fabrication, in-house detailing, material handling systems, and surface preparation. Our shop fabrication and welding procedures are of the highest quality and standards. We take pride meeting the critical schedule milestones of our customers. Our structural steel fabrication services routinely include steel structures, pipe bridges, catwalks, stairs, tool pedestals, handrails and ladders, canopies, equipment structures, and structural steel frames.

Technical Details:

1. Structural Design:

- Conforms to AISC, Eurocode, and Saudi building codes.
- Modular steel frames: columns, rafters, purlins, and bracing systems.
- Load considerations: live loads, dead loads, wind loads, seismic loads, snow loads (if applicable).
- Flexible spans up to 60m without intermediate supports, depending on project requirements.

2. Materials & Fabrication:

- High-grade structural steel: S235, S275, or S355 as per client specification.
- Pre-cut, drilled, and welded components in controlled fabrication yard.
- Surface treatment: hot-dip galvanization, anti-corrosion primer, and paint coating.
- Connections: bolted, welded, or hybrid systems for rapid assembly.

3. Roofing & Cladding:

- Options: insulated sandwich panels, trapezoidal steel sheets, or composite panels.
- Thermal and acoustic insulation as per client requirement.
- Rainwater drainage integrated with roof slope and gutter systems.

4. Foundation Interface:

- Designed to interface with raft, pile, or mat foundations.
- Anchor bolts pre-aligned for rapid installation.
- Load transfer calculations to ensure structural stability.

5. Erection & Assembly:

- Modular pre-fabrication reduces on-site construction time.
- Components numbered and labeled for efficient on-site assembly.
- Cranes and lifting equipment used to position trusses and columns safely.

6. Integration & Services:

- Provisions for MEP integration: HVAC, plumbing, electrical, fire safety.
- Expansion-ready design for future modular additions.
- Compliance with NFPA fire safety codes and industrial safety standards.

7. Applications:

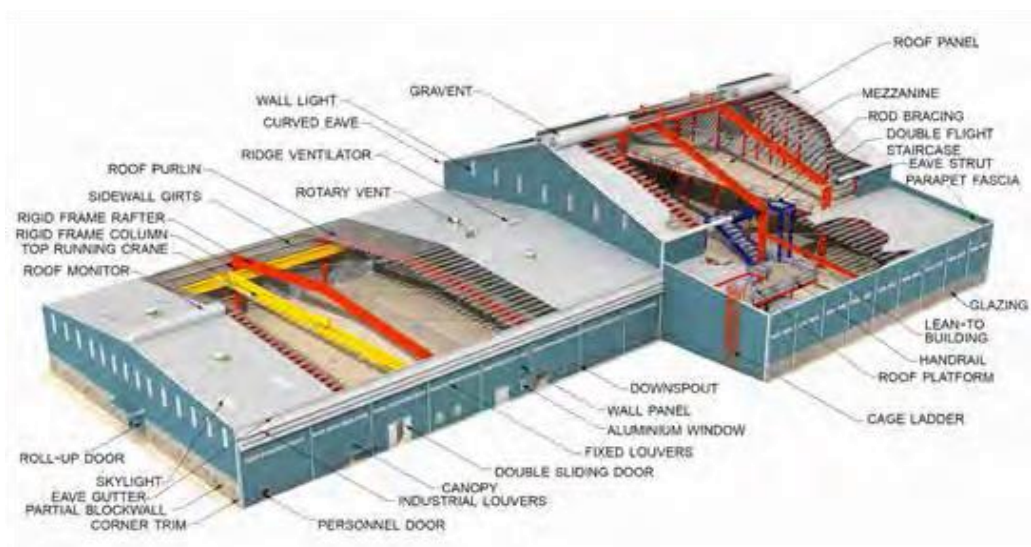
- Warehouses, workshops, and storage facilities.
- Oil & gas plant structures, utility sheds, and industrial halls.
- Aircraft hangars and modular office buildings.
- Temporary or semi-permanent site offices.

8. Advantages:

- Rapid construction, reduces project timelines by 30–50%.
- High strength-to-weight ratio allows large spans.
- Modular and flexible design for expansion.
- Durable, weather-resistant, and low-maintenance. Environmentally friendly: steel is recyclable.



Pre-engineered Buildings



Storage Steel Tank

Reef Co shall perform complete steel fabrication, welding, erection, sandblasting, and painting works for oil storage tanks, including all necessary scaffolding to ensure safe and precise assembly

Scope of Work:

1. **Steel Fabrication and Welding:**
 - Cutting, shaping, and preparing steel plates and sections as per approved drawings and specifications.
 - Performing welding works in accordance with international codes and standards (e.g., ASME, API, or client-specific requirements).
 - Conducting inspection and testing of welds, including visual inspection, radiographic, and ultrasonic testing to ensure structural integrity.
 - Ensuring dimensional accuracy and alignment of all fabricated components.
2. **Erection of Steel Structures:**
 - Transporting fabricated steel components to the site and positioning them for assembly.
 - Assembling and erecting steel structures using cranes, rigging, and alignment tools.
 - Bolting and welding structural components as per erection drawings.
 - Ensuring proper alignment, level, and plumb of all erected components.
3. **Sandblasting and Surface Preparation:**
 - Cleaning steel surfaces through abrasive blasting to remove rust, mill scale, and other contaminants.
 - Achieving the specified surface profile and cleanliness to ensure proper paint adhesion.
 - Verifying surface preparation quality as per project specifications.
4. **Painting and Coating:**
 - Applying primers, intermediate, and top coats using approved industrial paints.
 - Ensuring the coating thickness, finish, and curing meet project standards.
 - Protecting completed works until handover to prevent damage during construction.
5. **Scaffolding for Erection:**
 - Installing temporary scaffolding to facilitate safe access to all areas during fabrication, welding, and painting.
 - Ensuring scaffolding complies with safety regulations and standards.
 - Dismantling scaffolding after completion of works.
6. **Quality Assurance and Safety:**
 - All works are executed under strict quality control procedures, with inspections at each stage.
 - Compliance with safety regulations, including PPE, fire prevention, and safe lifting practices, is mandatory.
7. **Deliverables:**
 - Fully erected and painted steel oil storage tanks ready for commissioning.
 - Documentation of welding g, painting, and inspection





complete
system
solutions
from
a single
source

Reef Co undertakes specialty jobs, and works to fulfill Project requirements within client's

budget and deadlines. Reef Co provides skilled labor, on site and when required,

24 hours a day, 7 days a week. Whether client requires Construction to existing installations or facilities, contract Maintenance, or plant/equipment relocation, our trained, Knowledgeable technicians will find the best solution for your Project-related dilemmas in a timely manner. We have vast experience in working with major companies in The petrochemical and steel industry. We provide highly Qualified, company-trained workforce and materials to Complete projects "on-time" and "within budget". Experienced supervision and management ensure that all Contracts are conducted in a safe and timely manner, with Maximum compatibility for client



Special Experience of Mining Site Crusher

Reef Co undertakes specialty jobs, and works to fulfill Project requirements within client's for Mobile Crusher Works at Ma'aden Mining Site

- The work consists of mobilizing and setting up a mobile crusher unit to process blasted rock from mining operations into usable aggregate sizes **for Ma'aden projects**.
- Site Preparation: Leveling and preparing the crusher yard, installing barricades, and arranging utilities.
- Crusher Setup: Positioning the crusher, connecting conveyors, hoppers, and dust suppression systems, followed by trial runs.
- Crushing Operations: Feeding blasted rock into the crusher to produce graded aggregates (base, sub-base, fill, and other specified sizes).
- Material Handling: Stockpiling crushed material, segregating by size, dust suppression, and loading into trucks for use in plant operations or backfilling.
- Safety & Environment: Enforcing PPE, dust suppression, noise control, and safe operating practices.
- Quality Control: Conducting gradation and material tests to ensure compliance with Ma'aden standards. Demobilization: Dismantling and removing equipment, restoring the site, and submitting final reports with production and quality records.



Electrical Works

Scope of Work:

The electrical works encompass the installation and commissioning of power and control cabling systems, including the preparation of cable routes, installation of Duck Banks, cable pulling, and termination as per project specifications and standards.

1. Duck Bank Installation

- Definition: Duck Banks are pre-cast or constructed cable troughs or enclosures used to route and protect multiple power or control cables across areas such as roads, open fields, or equipment yards.
- Work Description:
- Site survey to determine the cable route and proper Duck Bank location.
- Excavation or foundation preparation for Duck Bank placement.
- Installation of Duck Bank units, ensuring proper alignment, leveling, and anchoring.
- Application of protective coatings or sealing to prevent water ingress (if required).
- Backfilling and compaction around the Duck Bank to ensure structural stability.
- Standards: Installation carried out in accordance with IEC, NEC, or project-specific electrical standards.



2. Cable Pulling

- Work Description:
- Preparation of cable reels and staging areas for safe handling.
- Installation of temporary supports, rollers, or sheaves along the cable route to minimize bending stress.
- Pulling of power and control cables through conduits, trays, Duck Banks, or direct buried paths using manual or mechanical methods.
- Monitoring pulling tension and velocity to prevent cable damage.
- Inspection of cable for mechanical damage, kinking, or insulation defects before and after installation.
- Safety Considerations:
- Adherence to safe working loads.
- Use of proper PPE and handling equipment.
- Coordination with site electrical isolation protocols.

3. Cable Termination

- Work Description:
- Preparation of cable ends including stripping, cleaning, and conductor preparation.
- Installation of lugs, glands, ferrules, or terminations as per cable type (XLPE, PVC, armored, etc.).
- Crimping, soldering, or compression of cable lugs to ensure electrical and mechanical reliability.
- Insulation and stress relief applied using heat-shrink or cold-shrink materials.
- Connection to switchgear, panel boards, transformers, junction boxes, or other electrical equipment.
- Testing and verification of continuity, insulation resistance, and polarity.
- Standards: Compliant with IEC 60287, IEC 60502, NEC, and project-specific requirements.



4. Quality Assurance & Testing

- Visual inspection for compliance with drawings and specifications.
- Insulation resistance testing using megger.
- Continuity and polarity verification.
- Documentation of cable schedules, test results, and as-built information

Fire Fighting System

Installation Works

Reef Co shall provide full installation, testing, and commissioning of Fire Fighting Systems within infrastructure facilities, electrical substations, and buildings.

Key Highlights:

Piping Networks

- Underground & aboveground piping (CS, GI, DI, HDPE).
- Fabrication, welding, grooving, and hydrostatic testing.

Fire Water Storage & Pumping System

- Fire water tanks (Steel/GRP).
- Pump assemblies: diesel, electric, and jockey pumps with controllers.
- Valves: gate, butterfly, non-return, and pressure relief.

Fire Hydrant & Hose Reel System

- Yard hydrants and underground valve chambers.
- Wall-mounted hose reels, fire hoses, and cabinets.
- Flow and pressure testing.

Automatic Sprinkler System

- Upright and pendent sprinklers with alarm valves.
- Complete branch line piping and pressure control.
- Integration with fire alarm system.

Fire Alarm & Control Integration

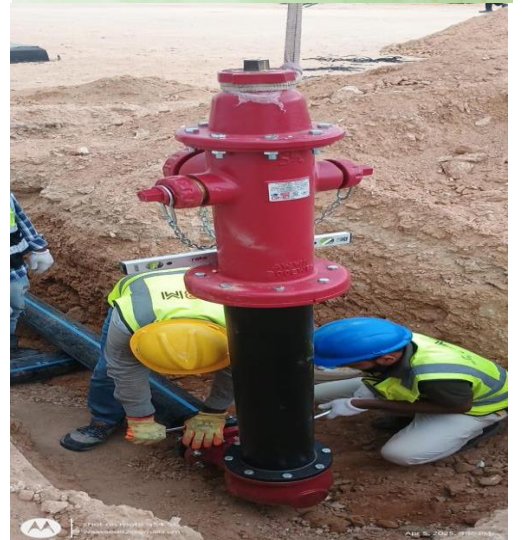
- Fire alarm panels, detectors, manual call points, sounders/beacons.
- Auto-start interface with pumps and electrical systems.
- Full testing and commissioning of alarms and controls.

Quality & Compliance:

- Installation as per **NFPA standards** and **Civil Defense requirements**.
- Comprehensive inspection, testing, and certification.

Deliverables:

- Fully operational firefighting system for infrastructure, substations, and buildings.
- Complete as-built drawings, test certificates, and commissioning documents



Certificate of Registration



This is to certify that Occupational Health & Safety Management System of



REEF AL GARBIA CONTRACTING COMPANY LLC

KING ABDUL AZIZ STREET-46429, BUILDING NO. 2452-7378, 2ND FLOOR,
OFFICE/NO-6, YANBU AL BAHAR-SAUDI ARABIA

is in accordance with the requirements of the following standard

ISO 45001:2018

(Occupational Health & Safety Management System)

SCOPE

Contracting Services (Earth Works, Building Construction, Tank Farm Construction,
Landfill Construction, HDPE Geomembrane Lining Works,
Road Asphalt Works, Electrical Works)

Certificate Number : SCK/03/RAG/23/96/1093

To verify certificate, visit at :

www.sckcerts.com
www.iafcertsearch.org

Initial Registration Date : 06-Mar-2023

1st Surveillance Date : 06-Feb-2024

2nd Surveillance Date : 06-Feb-2025

Certificate Expiry Date : 05-Mar-2026

Issued by SCK Certifications Pvt. Ltd.

Abhishek
Director



Accreditation Board : 3080, Saturn Street, Suite 100, Brea, California 92821-1732, USA

This certificate remains the property of SCK and must be returned to SCK on Cancellation or Suspension of the certificate. Validity of the certificate is subject to successful completion of surveillance audits. Further clarification regarding the scope of this certificate and the applicability of standard may be obtained by consulting the Organisation on info@sckcerts.com

Certificate of Registration



This is to certify that Quality Management System of



REEF AL GARBIA CONTRACTING COMPANY LLC

KING ABDUL AZIZ STREET-46429, BUILDING NO. 2452-7378, 2ND FLOOR,
OFFICE/NO-6, YANBU AL BAHAR-SAUDI ARABIA

is in accordance with the requirements of the following standard

ISO 9001:2015
(Quality Management System)

SCOPE

Contracting Services (Earth Works, Building Construction, Tank Farm Construction,
Landfill Construction, HDPE Geomembrane Lining Works,
Road Asphalt Works, Electrical Works)

Certificate Number : SCK/01/RAG/23/96/1091

To verify certificate, visit at :

www.sckcerts.com
www.iafcertsearch.org

Initial Registration Date : 06-Mar-2023
1st Surveillance Date : 06-Feb-2024
2nd Surveillance Date : 06-Feb-2025
Certificate Expiry Date : 05-Mar-2026

Issued by SCK Certifications Pvt. Ltd.

Abhishek
Director



Accreditation Board : 3060, Saturn Street, Suite 100, Brea, California 92821-1732, USA

This certificate remains the property of SCK and must be returned to SCK on Cancellation or Suspension of the certificate. Validity of the certificate is subject to successful completion of surveillance or audits. Further clarification regarding the scope of this certificate and the applicability of standard may be obtained by consulting the Organisation on info@sckcerts.com

Certificate of Registration



This is to certify that Environmental Management System of



REEF AL GARBIA CONTRACTING COMPANY LLC

KING ABDUL AZIZ STREET-46429, BUILDING NO. 2452-7378, 2ND FLOOR,
OFFICE/NO-6, YANBU AL BAHAR-SAUDI ARABIA

is in accordance with the requirements of the following standard

ISO 14001:2015

(Environmental Management System)

SCOPE

Contracting Services (Earth Works, Building Construction, Tank Farm Construction,
Landfill Construction, HDPE Geomembrane Lining Works,
Road Asphalt Works, Electrical Works)

Certificate Number : SCK/02/RAG/23/96/1092

To verify certificate, visit at :

www.sckcerts.com

www.iafcertsearch.org

Initial Registration Date : 06-Mar-2023

1st Surveillance Date : 06-Feb-2024

2nd Surveillance Date : 06-Feb-2025

Certificate Expiry Date : 05-Mar-2026

Issued by SCK Certifications Pvt. Ltd.

Abhishek
Director



Accreditation Board : 3060, Saturn Street, Suite 100, Brea, California 92821-1732, USA

This certificate remains the property of SCK and must be returned to SCK on Cancellation or Suspension of the certificate. Validity of the certificate is subject to successful completion of surveillance or audits. Further clarification regarding the scope of this certificate and the applicability of standard may be obtained by consulting the Organisation on info@sckcerts.com

٧٠٠٧٣٠٦٩٠٠

الرقم الموحد :

٤٧٠٠٠١٤٤٢٤

رقم المنشأة :

١٤٣٣/٠٦/١٤ هـ

التاريخ :

شهادة تسجيل الشركة Company Registration Certificate

وزارة التجارة
Ministry of Commerce

الاسم التجاري للشركة : شركة ريف الغربية للمقاولات - شركة ذات مسؤولية محدودة

نوعها : ذات مسؤولية محدودة مختلطة

جنسيتها : سعودي

مدة الشركة : ٩٩ سنة

تبدأ من : ١٤٤٤/٠١/٠٣ هـ

وتنتهي في : ١٥٤٦/٠١/١٨ هـ

مركزها الرئيسي : ٤٦٢٧، أبوبكر الصديق، ٨٣٩٦

هاتف : ٥٠٢٥٨٨٨٥٨

الرمز البريدي : ٤٦٤٢٨

ص. ب :

النشاط : للاطلاع على بيانات الأنشطة الرجاء مسح الرمز التجاري

رأس المال : ١٠٠,٠٠٠ ريال سعودي

المديرون : 1 احمد ابراهيم محمد الصمداني

2 عبد المجيد فوزي رحمان

3

4

5

6

7

8

9

10

11

12

13

14

15

16

سلطات المدير/المديرون : حسب ما نص عليه عقد الشركة

يشهد مكتب السجل التجاري بمدينة : ينبع

بأنه تم تسجيل الشركة المذكورة أعلاه بمدينة : ينبع

١٤٤٨/٠١/٠٣ هـ

٧٤٢٢٣٢٦

١٤٤٣/٠٥/٠٣ هـ

وتاريخ :

To Verify The Information Of This Certificate Visit <http://qr.mc.gov.sa> يمكنكم التحقق من صحة هذه الشهادة بالدخول على

+966 11 294 4444 | Riyadh 11162 Kingdom of Saudi Arabia | المملكة العربية السعودية | www.mc.gov.sa MCgovSA @ f t y



تاريخ الإصدار: 2022/09/28
الرقم المميز: 3114134537



الهيئة العامة للزكاة والدخل
General Authority of Zakat & Tax



شهادة تسجيل في ضريبة القيمة المضافة VAT Registration Certificate

تشهد الهيئة العامة للزكاة والدخل بأن المكلف أدناه مسجل في ضريبة القيمة المضافة
بتاريخ 2022/09/28

Hereby, The General Authority of Zakat & Tax (GAZT) certifies that the taxpayer below is
VAT registered on 28/09/2022

Taxpayer Name:	شركة ريف الغربية للمقاولات - شركة ذات مسؤولية محدودة	اسم المكلف
VAT Registration Number:	311413453700003	رقم التسجيل الضريبي
Effective Registration Date:	2022/10/01	تاريخ نفاذ التسجيل
Taxpayer Address:	بلدج بلدج، البوكر الصديق، 46428	عنوان المكلف



كمكلف مسجل في ضريبة القيمة المضافة، لا يجوز لك تحصيل ضريبة القيمة المضافة من عملائك قبل تاريخ
نفاذ التسجيل بالضريبة. في حال تبين غير ذلك، ستقوم الهيئة العامة للزكاة والدخل بتفويض الغرامات المستحقة

هذه الوثيقة مرسلة من النظام الآلي ولا تحتاج إلى توقيع
- الهيئة العامة للزكاة والدخل -

خطاب الآيبان IBAN Letter



Branch

القنوات الإلكترونية
Digital Channels

فرع

Date

18-08-2024

التاريخ

Serial Number

IB04776335491723951340981

الرقم التسلسلي

QR Code



رمز ال QR

Mr. REEF ALGARBIA ESTABLISHMENT ID 4700014424	شركة ريف الخريفة للمقاولات - شركة ذات مس ذواتية محدودة هوية 4700014424
We would like to thank you for banking with the Saudi National Bank, and would also like to assure you that we will continue to deliver premium service and maximum accuracy and security regarding your transaction; and according to your request, herein below is your IBAN number:	نود أن نقدم بجزيل الشكر والامتنان على تعاملك مع البنك الأهلي السعودي، ونؤكد لكم استمرارنا في تقديم أفضل الخدمات وضمان أقصى حدود الثقة والأمان في تعاملاتكم المصرفية معنا. وبناء على طلبكم تم طباعة هذا النموذج المتضمن رقم حسابكم لدى البنك الأهلي السعودي الخاص بكم:
Account Number at SNB 33100000480910	رقم الحساب في البنك الأهلي السعودي
International Account Number SA3110000033100000480910	رقم الحساب الدولي (IBAN)
Swift Code NCBKSAJE	رمز الـ سويفت
We would like to highlight that you can use your IBAN number in the following services: <ul style="list-style-type: none">In moving your payroll to the Saudi National Bank, by providing this letter to your employerIn receiving payments or deposits to your account locally or internationally through your IBAN/Account number.	ونود لفت نظركم أن رقم الحساب الدولي (IBAN) يتم استخدامه في العمليات المصرفية التالية: <ul style="list-style-type: none">نقل إيداع الراتب إلى البنك الأهلي السعودي، من خلال تقديم هذا الخطاب إلى صاحب العمللامتلاك حوالات أو إيداعات من خلال بنوك محلية أو دولية من خلال رقم الحساب/الحساب الدولي (IBAN)
Yours sincerely, Saudi National Bank	مع فائق التقدير. البنك الأهلي السعودي

To verify the letter, scan the QR code above or visit <https://alahi.li/3WKo0ZL>
This letter is certified and is printed upon customer request without any responsibility or obligation on the Saudi National Bank or its employees and maintaining confidentiality of information in this document is the sole responsibility of its holder.

يمكن التحقق من صحة الوثيقة بمسح رمز ال QR أعلاه أو بزيارة الرابط <https://alahi.li/3WKo0ZL>
أنتي مسؤولة أو التزام على البنك الأهلي السعودي وأل أي من موظفيه والحفاظ على سرية المعلومات في هذا المستند هي على مسؤولية حامل الوثيقة التامة.



Saudi National Bank | البنك الأهلي السعودي

البنك الأهلي السعودي | شركة مساهمة سعودية | رأس المال 60,000,000,000 ريال سعودي مدفوع بالكامل | الرقم الضريبي 300002471110003 | سجل تجاري رقم 4030001588
خاضعة لإشراف ورقابة البنك المركزي السعودي | مرخص لها بموجب الأمر الملكي رقم 3737 وتاريخ 20/4/1373 هـ الموافق 26/12/1953 م
برج البنك الأهلي السعودي، طريق الملك فهد، حي العقيق - 3208 وحدة رقم 778، الرياض 13519 - 6676، المملكة العربية السعودية
The Saudi National Bank | A Saudi Joint Stock Company | Paid-up Capital SAR 60,000,000,000 | VAT Number 300002471110003 | C.R. 4030001588
Under the supervision and control of The Saudi Central Bank | Licensed pursuant to Royal Decree No. 3737 issued on 20/4/1373H (corresponding to 26/12/1953G) | The Saudi National Bank Tower, King Fahd Road 3208, Al Aqeeq District Unit No. 778, Riyadh 13519 - 6676, Kingdom of Saudi Arabia |



شهادة إشترك

الدرجة : الثالثة

التاريخ : ١٤٤١/٠٦/٠١ م

رقم العضوية : ٢٠٥٠٠١١٤١٠٣

الموافق : ١٤٤١/٠٦/٠١ هـ

تشهد الغرفة التجارية الصناعية في ينبع بأن

مؤسسة ريف الغربية للمقاولات

رقم السجل التجارى : ٤٧٠٠٠١٤٤٢٤

اسم المسؤول : احمد ابراهيم محمد الصمداني

مسجلة لديها لهذا العام و ينتهي مفعول هذه الشهادة في ٢٠٢٤/١٢/٠٢ الموافق ١٤٤٦/٠٦/٠١ هـ



نسخة إلكترونية رقم 205001114103 يمكنك التحقق منها عن طريق <https://www.coccertificate.org>

شهادة التوطين

رقم الشهادة	تاريخ الإصدار	تاريخ انتهاء الشهادة
284084-67255776	12/05/2025	05/11/2025
تاريخ الترقية للشهادة	07/08/2025	
حالة الشهادة	تم التخليق	
اسم المتقدم	مركز ريف القرية المتكامل - شركة ذات مسؤولية محدودة	
رقم الشركة	16-1966591	
رقم الترخيص	—	
الرقم الوطني للشهادة	7007806500	
مستوى التوطين	المتوسط	
معدل التوطين	16 %	



مركز التوطين هو مشروع مشترك بين القطاعين العام والخاص، يهدف إلى تطوير وتنفيذ مشاريع التوطين في مختلف المجالات.

مركز التوطين هو مشروع مشترك بين القطاعين العام والخاص، يهدف إلى تطوير وتنفيذ مشاريع التوطين في مختلف المجالات.

مركز التوطين هو مشروع مشترك بين القطاعين العام والخاص، يهدف إلى تطوير وتنفيذ مشاريع التوطين في مختلف المجالات.

مركز التوطين هو مشروع مشترك بين القطاعين العام والخاص، يهدف إلى تطوير وتنفيذ مشاريع التوطين في مختلف المجالات.

شهادة

اسم المنشأة	شركة ريف الغربية للمقاولات - شركة ذات مسؤولية محدودة		
اسم صاحب العمل			
رقم الاشتراك	٥٦٦٥٧١٨٨٩	الرقم الوطني الموحد	7007306900
العنوان	ينبع السعودية 46429		

عدد المشتركين السعوديين	عدد المشتركين غير السعوديين	المجموع
رقما	4	22
كتابة	أربعة مشتركين	اثنا عشر مشتركين

تشهد المؤسسة العامة للتأمينات الاجتماعية بأن المنشأة المذكورة أعلاه قد أوفت بالتزاماتها تجاه المؤسسة وفق البيانات المقدمة منها حتى تاريخ اصدار هذه الشهادة، والتي تم منحها لتقديمه لأية جهة تطلبها، وهي صالحة لجميع الأغراض التي نصت عليها الفقرة (6) من المادة (التاسعة عشر) من نظام التأمينات الاجتماعية الصادر بالمرسوم الملكي رقم (م/33) بتاريخ 1421/9/3 هـ و المادة (العاشر) من نظام التأمينات الاجتماعية الصادر بالمرسوم الملكي رقم (م/273) وتاريخ 1445/12/26 هـ .

هذه الشهادة سارية المفعول حتى 1447/03/12 هـ.

Public عام

الشهادة معتمدة من صاحب الصلاحية ولا تحتاج لتوقيع أو ختم



تحقق من صحة وصلاحيه الشهادة عبر زيارة الرابط أدناه في الموقع الالكتروني للمؤسسة العامة للتأمينات الاجتماعية أو عن طريق استخدام الرمز المعرف التالي

تعذر هذه الشهادة من الوثائق الالكترونية الحكومية الرسمية ويحظر قطعاً تقليدها أو إدخال أي تعديلات عليها سواء بالإضافة أو الحذف أو التمييز في بياناتها أو غير ذلك من أنواع التعميل، وتعد الشهادة لاثبة إذا شابهت من ذلك كما تعرض صاحبها للملاحقة النظامية أمام الجهات المختصة بالإضافة إلى ما يفرضه نظام التأمينات الاجتماعية من عقوبات، ولا يجوز تداول الشهادة إلا في الأغراض التي أصدرت لأجلها وفقاً لأحكام نظام التأمينات الاجتماعية والمؤسسة العامة للتأمينات الاجتماعية غير مسؤولة عن أي عملية تزوير أو تعديل تتم على البيانات الواردة فيها.



التاريخ
الموافق
رمز الشهادة

١٤٤٥/٠٩/١٤
٢٤/٠٣/٢٠٢٤

٤٤٢٩٩٠٩٥



شهادة

إسم المنشأة : شركة ميثاق الاندلس للتجارة و للمقاولات

الرياض
السعودية

رقم الاشتراك : ٥٣٩٧٣٦٥٢٣

رقم السجل التجاري : ١٠١٠٤٩٤٥٤٠

مصدره :

رقما	كتابة	عدد المشتركين السعوديين
٢٥	سنة مشتركين	عدد المشتركين غير السعوديين
٣١٨	ثلاثة و ثلاثون مشتركا	المجموع
٣٤٣	تسعة و ثلاثون مشتركا	

تشهد المؤسسة العامة للتأمينات الاجتماعية بأن المنشأة المذكورة أعلاه قد أوفت بالتزاماتها تجاه المؤسسة وفق البيانات المقدمة منها حتى تاريخ إصدار هذه الشهادة ، والتي تم منحها لتقديمها لأية جهة تطلبها ، وهي صالحة لجميع الأغراض التي نص عليها نظام التأمينات الاجتماعية في المادة (١٩/٦) منه.

هذه الشهادة سارية المفعول حتى ١٤٤٥/١٠/١٤ هـ

يلزم التحقق من صحة وصلاحيّة الشهادة عبر زيارة الرابط
أثناء في الموقع الإلكتروني للمؤسسة العامة للتأمينات الاجتماعية

أو
عن طريق استخدام
الرمز المعرف التالي :



www.gosi.gov.sa/vc

(الشهادة معتمدة من صاحب الصلاحية ولا تحتاج إلى توقيع أو ختم)



www.gosi.gov.sa
800 1243344



تعد هذه الشهادة من الوثائق الإلكترونية الحكومية الرسمية ، ويحظر قطعيا تقليدها أو إدخال أي تعديلات عليها سواء بالإضافة أو الحذف أو التغيير في بياناتها أو غير ذلك من أنواع التعديل ، وتعد الشهادة لاقية إذا شابهها شيء من ذلك ، كما تعرض صاحبها للملاحقة النظامية أمام الجهات المختصة بالإضافة إلى ما يفرضه نظام التأمينات الاجتماعية من عقوبات ، ولا يجوز تداول الشهادة إلا في الأغراض التي أصدرت لأجلها وفقا لأحكام نظام التأمينات الاجتماعية ، والمؤسسة العامة للتأمينات الاجتماعية غير مسؤولة عن أي آثار أخرى مترتبة قبل الغير عن الشهادة وغير مسؤولة عن أي عملية تزوير أو تعديل تلم على البيانات الواردة فيها .





رقم الشهادة: ١٠٢٢٢٠٠٠٤١٩٨٣٢٦
التاريخ: ١٤٤٤/٠٣/٠١ هـ
الرقم المميز: ٣١١٤١٣٤٥٣٧



الهيئة العامة للزكاة والدخل
General Authority of Zakat & Tax

المملكة العربية السعودية
الهيئة العامة للزكاة والدخل
General Authority of Zakat & Tax

شهادة CERTIFICATE تسجيل

تشهد هيئة الزكاة والضريبة والجمارك بأن المكلف / شركة ريف الغربية للمقاولات - شركة ذات مسؤولية محدودة
شركة رقم ٧٠٠٧٣٠٦٩٠٠ وسجل تجاري / رخصة / عقد رقم ٤٧٠٠٠١٤٤٢٤
مسجل لديها بالرقم المميز ٣١١٤١٣٤٥٣٧ بتاريخ ١٤٤٤/٠١/٠٣ هـ

وقد منح هذه الشهادة لتمكينه من إنهاء جميع معاملاته ماعدا صرف مستحقاته النهائية عن العقود .
يسري مفعول هذه الشهادة حتى تاريخ ١٤٤٥/٠٧/١٥ هـ الموافق ٢٠٢٤/٠١/٢٧ م .
(الخامس عشر من رجب ألف وأربعمائة وخمسة وأربعون هجري)



الختم الرسمي

هذه الوثيقة مستخرجة من النظام الآلي ولا تحتاج إلى توقيع
لا يعتد بهذه الشهادة إلا بعد التحقق من موقع الهيئة www.gazt.gov.sa



Earth Work



Mechanical and Piping- Electrical



Company Information

COMPANY NAME

Reef Al Garbia Contracting Co LLC (Reef Co) P.O. Box No: 1864 Yanbu Al Bahar-46429 KSA

Yard and Workshop Location

Riyadh North

Commercial Registration No

4700014424 (7007306900)

Company's Line of Business

Civil Works and Mechanical and Piping, Tanks, Crushing, Electrical

Key Personal Information

Mr. Ahmed Al Samdani (General Manager)

(M) 0502588858

ahmedalsamdani@reefalgarbia.com

Mr. Fowzil R Abdul Majeed (Project Director)

(M) 0558304597

fowzil@reefalgarbia.com

Mr. Risan Subaideen (Business Development Manager)

risan@reefalgarbia.com

(M) +966536701443

Mr. Jerry Candar (Construction Manager)

jerry@reefalgarbia.com

(M) +966544541342

Mr. Rifan Subaideen (Project Supervisor Civil)

(M) +96659497394

Mr. Naleem Mohamed Mohideen (Project Supervisor Piping)

naleem@reefalgarbia.com

(M) +966554040487

Mr. Haseem Aliyar (Site Engineer)

(M) 0536538236

haseem@reefalgarbia.com

Mahmeen Abdul Gafoor (Quantity Surveyor)

(M) 0597754214

mahmeen@reefalgarbia.com

Ibrahim Ahmed Samdani (HR Manager)

(M) 0564943152

ibrahim@reefalgarbia.com

Fathima Siraj Al Samdani (HR Secretary)

fathimasiraj@reefalgarbia.com